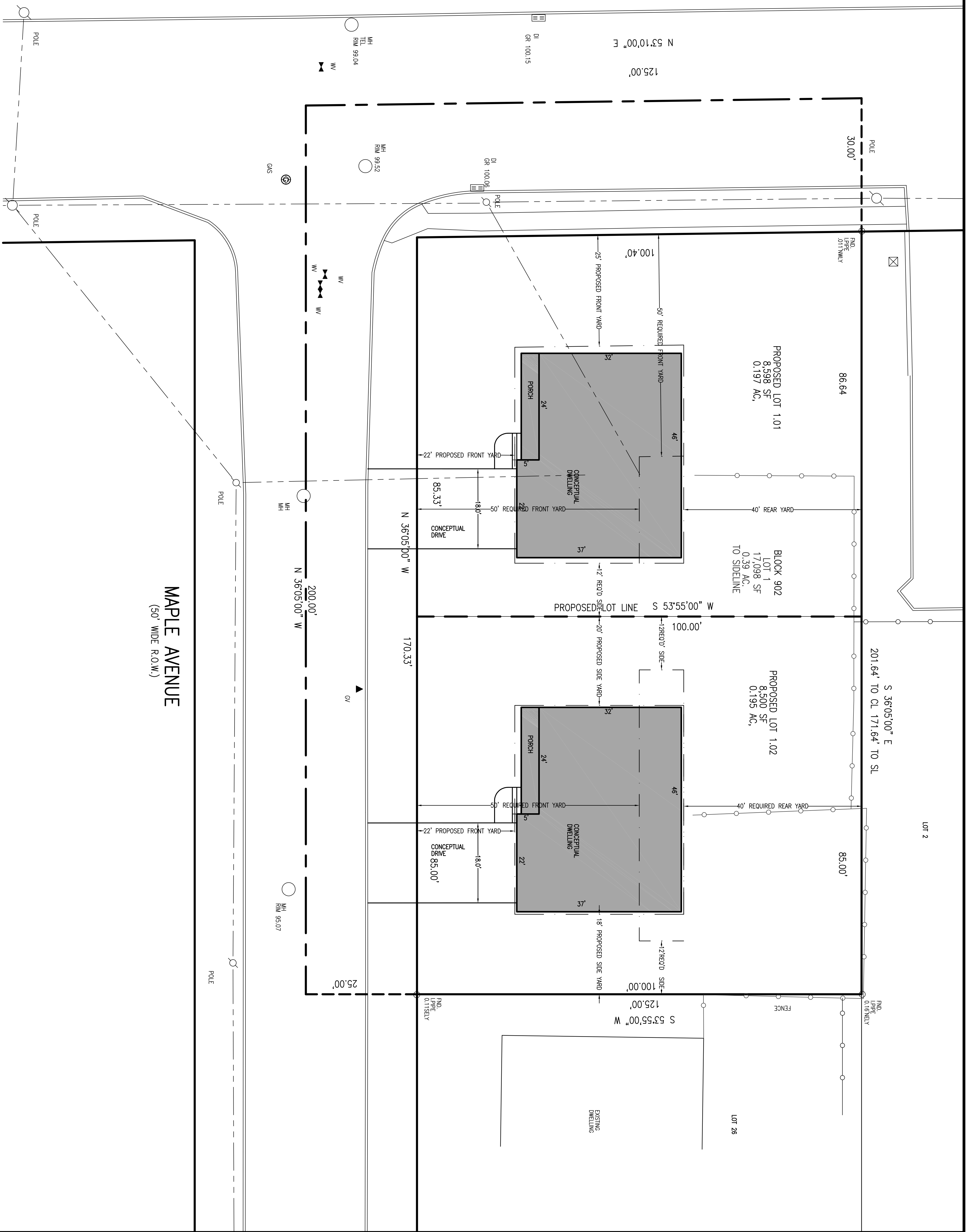


SPRINGFIELD AVENUE
(60' WIDE R.O.W.)

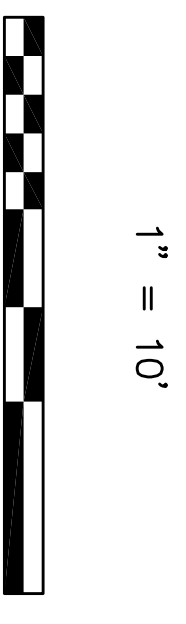


DRAWN BY: SP CHECKED BY: WCH

JOB No. 20-009

BOOK 20-009

SCALE 1" = 10'



DATE SEPTEMBER 25, 2020

REVISIONS

NOTES
CERTIFICATE OF AUTHORIZATION
No. 240A27959700

Murphy & Hollows Associates LLC
 CIVIL ENGINEERING AND SURVEYING
 192 CENTRAL AVENUE, SPRINGFIELD, NJ 07980
 908.520.2828 FAX: 908.520.2829
 MINOR SUBDIVISION
 OF
 LOT 1 BLOCK 902
 6 MAPLE AVENUE &
 SPRINGFIELD AVENUE
 TOWNSHIP OF
 BERKELEY HEIGHTS
 UNION COUNTY
 NEW JERSEY
 LAYOUT PLAN

AIDAN T. MURPHY
 N.J. LIC. PROFESSIONAL ENGINEER #21319
 1973-2010

WILLIAM G. HOLLOWAY
 N.J. LIC. PROFESSIONAL ENGINEER
 N.J. PROFESSIONAL PLANNER #2330

FILE LF20-009 SHEET 3 OF 3