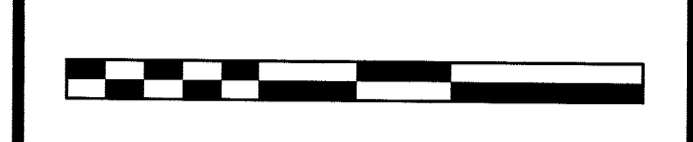


DRAWN BY: SP CHECKED BY: WGH

JOB No. 19-075

BOOK

SCALE 1" = 20'



GRAPHIC SCALE

DATE JUNE 23, 2020

REVISIONS
OCTOBER 21, 2020

CERTIFICATE OF AUTHORIZATION
No. 24GA27959700

NOTES

NOTES

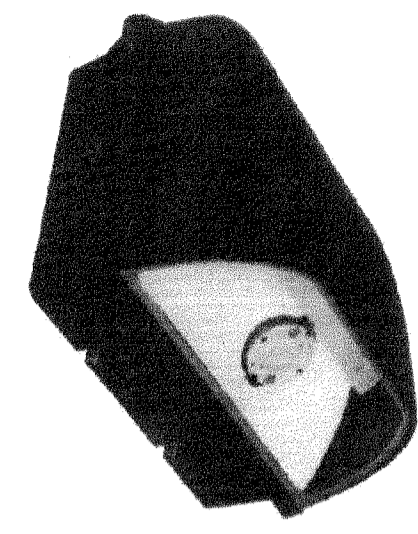
Murphy & Hollows Associates LLC
CIVIL ENGINEERING AND SURVEYING
192 CENTRAL AVENUE, STIRLING, NJ 07980
908.560.1255 murphyhollows@gmail.com

SITE PLAN FOR LOT 20 BLOCK 203 389-391 SPRINGFIELD AVENUE TOWNSHIP OF BERKELEY HEIGHTS UNION COUNTY NEW JERSEY GRADING PLAN

AIDAN T. MURPHY
N.J. LIC. PROFESSIONAL ENGINEER #21319
1973-2016

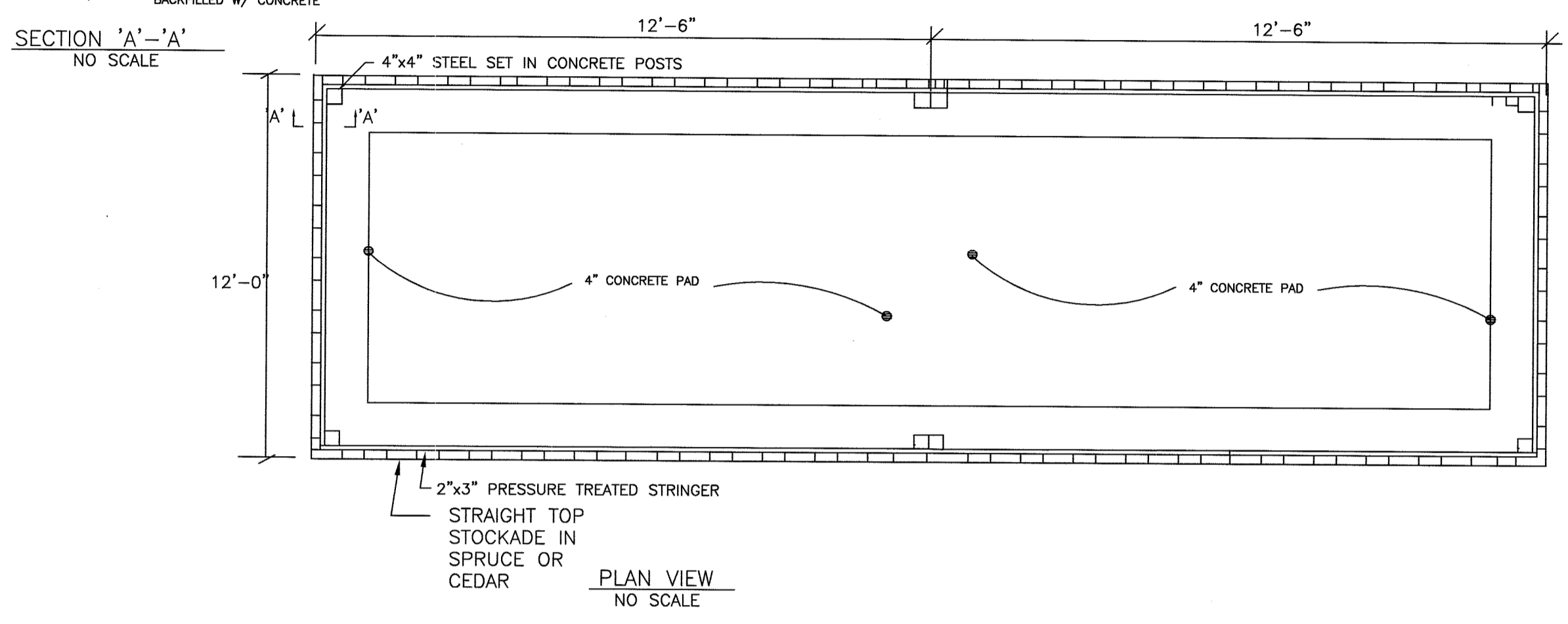
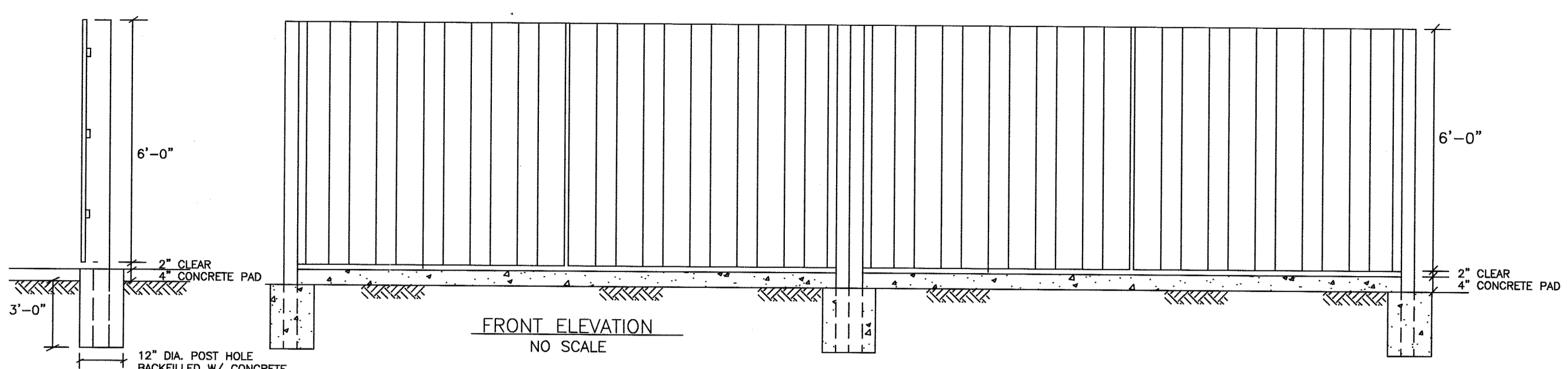
William G. Hollows
WILLIAM G. HOLLOWES
N.J. LIC. PROFESSIONAL ENGINEER & LAND SURVEYOR #27473
N.J. PROFESSIONAL PLANNER #2530

FILE	SHEET
LF19-075	4
	OF
	4

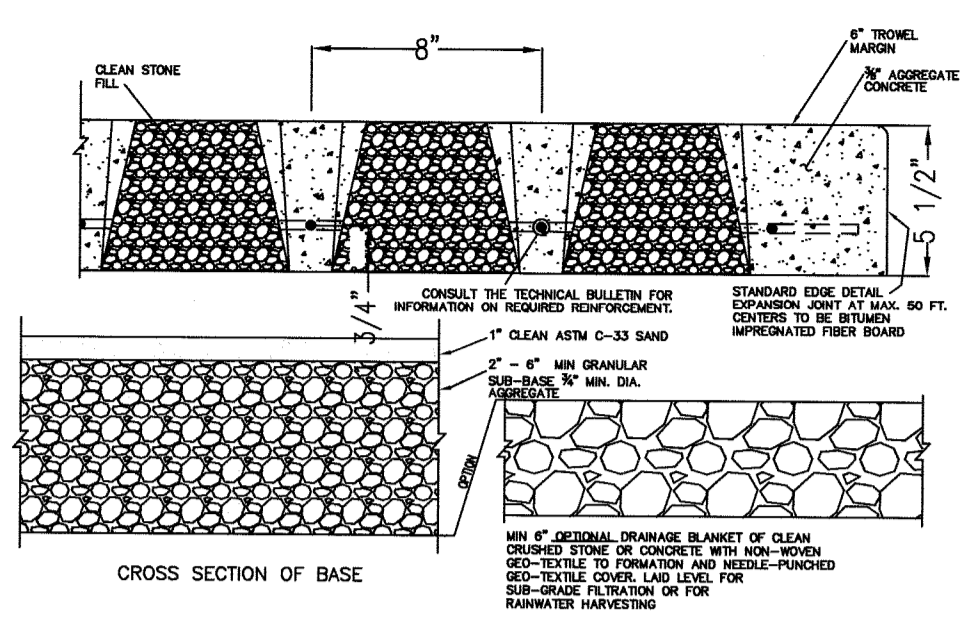


C-Lite LED Full Cutoff Architectural Wall Pack

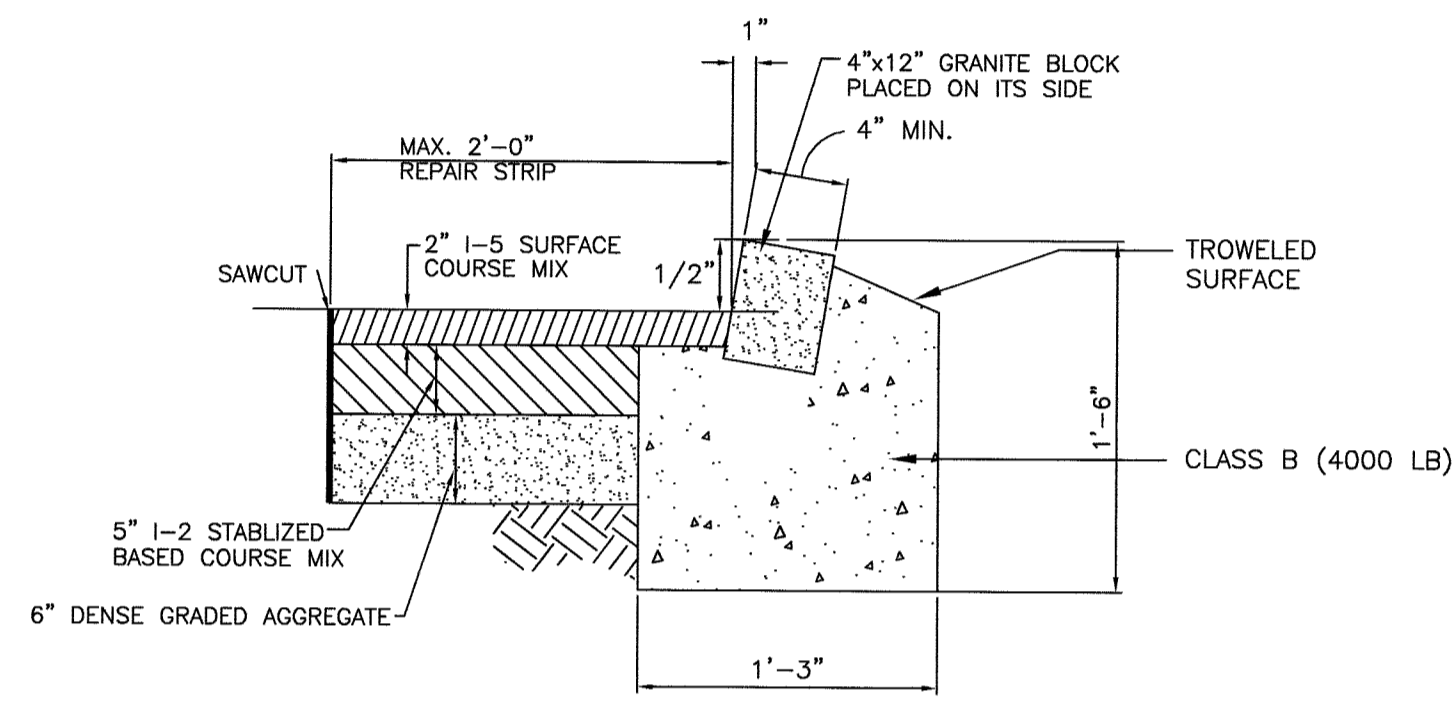
WALL MOUNTED LIGHT DETAIL



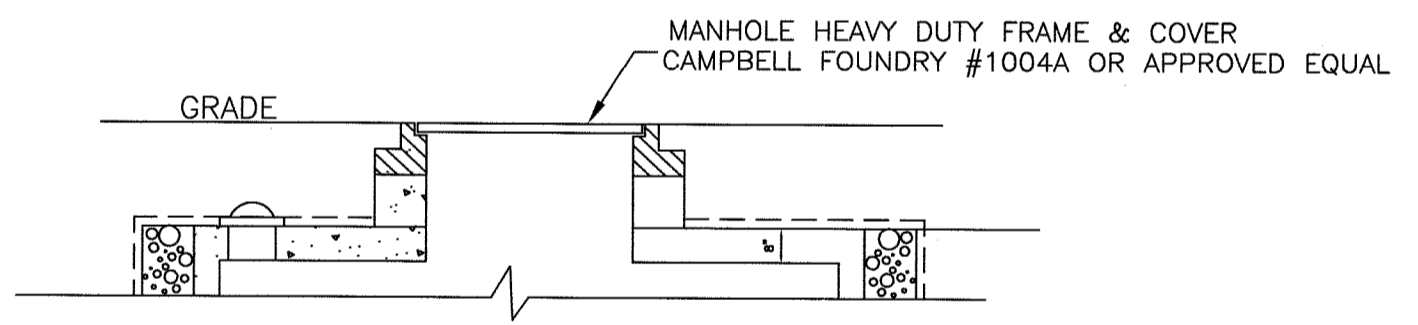
TRASH ENCLOSURE DETAIL
NO SCALE



GRASSCRETE DETAIL

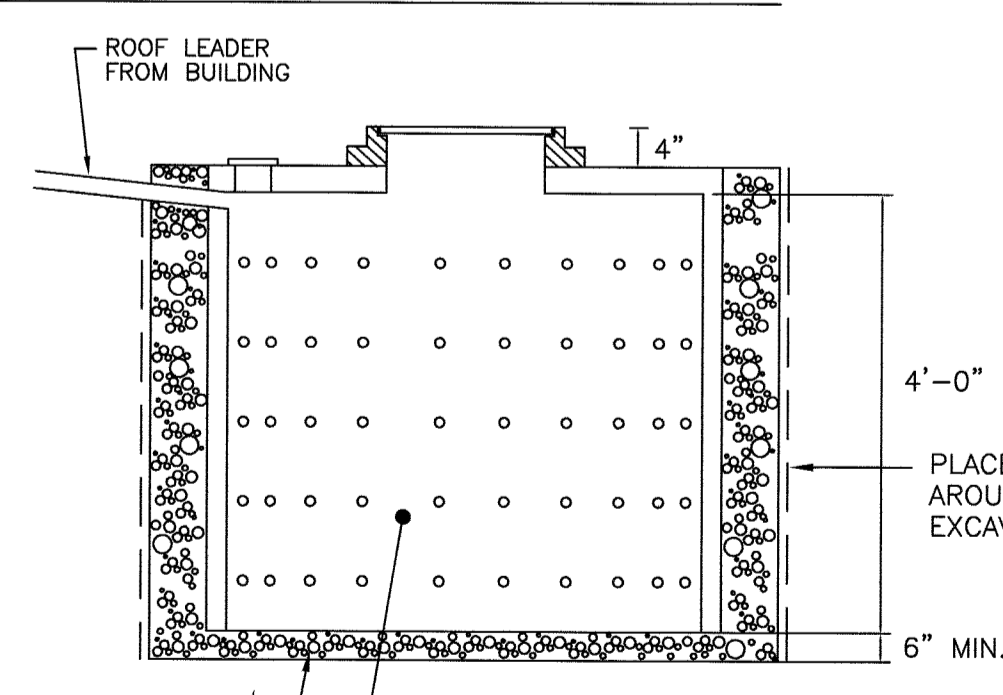


DEPRESSED CURB DETAIL WITH PAVEMENT REPAIR STRIP
N.T.S.



DRYWELL MANHOLE/GRATE DETAIL

DRYWELL TO BE HEAVY DUTY AND TO HAVE MANHOLE ACCESS



LEADER DRAIN DRYWELL DETAIL

VERIFY SOIL PERMEABILITY PRIOR TO CONSTRUCTION WITH RESULTS TO DESIGN ENGINEER TO VERIFY SUITABILITY OF THE DESIGN AND COPY TO TOWNSHIP ENGINEER.

DRYWELL CALCULATIONS

INCREASE IN IMPERVIOUS COVERAGE = 1354 SF
STORE 3.5" OF RUNOFF
(1354 SF)(3.5/12) = 394.9 CF
STORAGE VOLUME OF A 6' DIA. DRYWELL
IN A 10'x10' TRENCH = 57 CF/LF
394.9 CF/57 CF/LF = 6.9 LF
USE (2) 6' DIA DRYWELL 4'-0" DEEP
IN A 10'x10' GRAVEL TRENCH

N:\CAD Drawings\2019\19-075\APARTMENT ADDITIONS\REV1\19-075SP1.dwg, 10/22/2020 3:32:27 PM