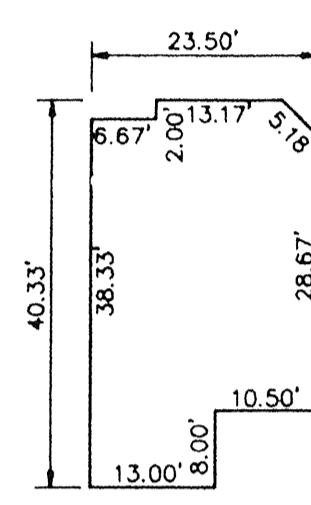
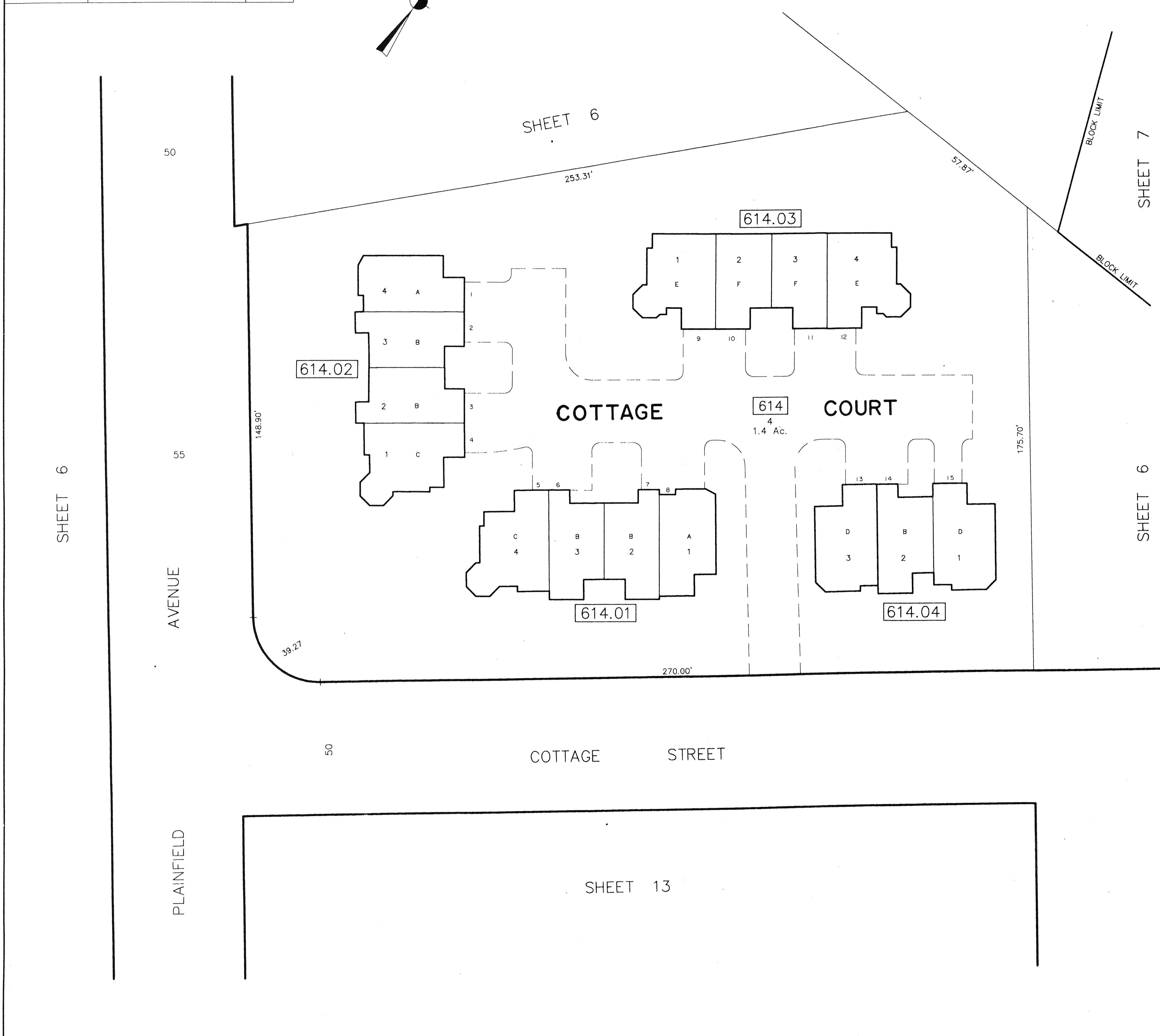
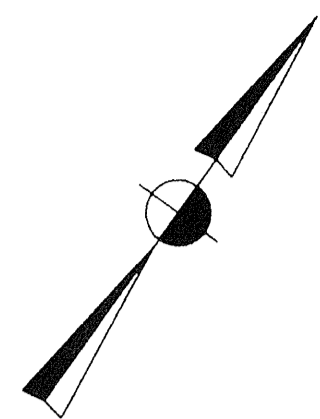
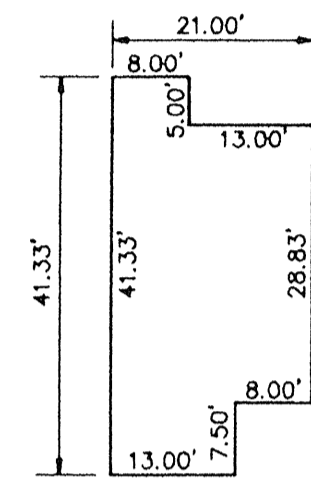


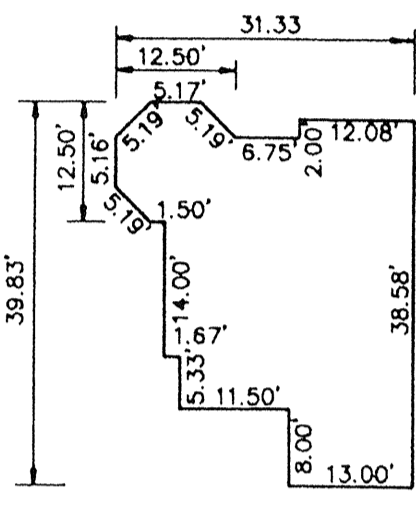
REVISIONS		
DATE	NAME	NO.
MARCH 15, 1995	MICHAEL T. ANGELINE	14156
JUNE 6, 1996	MATTHEW L. MARTINI	30088
DEC. 31, 2007	WERNER A. MALL, P.L.S.	37201



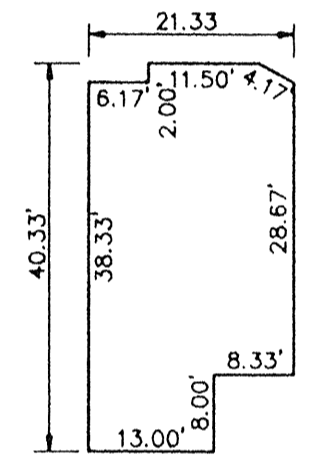
UNIT A
857 S.F.



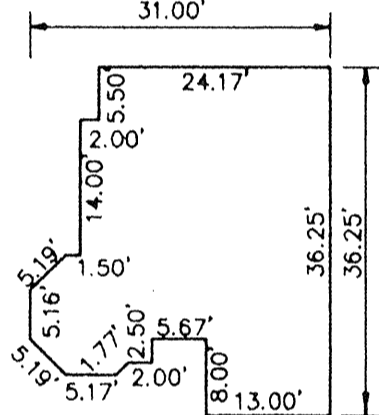
UNIT B
743 S.F.



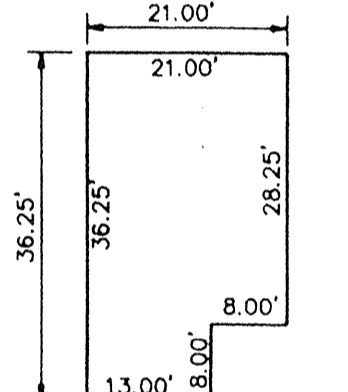
UNIT C
981 S.F.



UNIT D
775 S.F.



UNIT E
896 S.F.



UNIT F
697 S.F.

NEW JERSEY DEPARTMENT OF THE TREASURY
DIVISION OF TAXATION
LOCAL PROPERTY BRANCH
APPROVED AS A TAX MAP PURSUANT TO THE
PROVISIONS OF CHAPTER 175, LAWS OF 1913, ETC.
FOR THE LOCAL DIVISION OF TAXATION

BY: *Michael Thomas Angeline* L.S.
LIC. # 15434, dated 12/15/94

DATE: APR 15 1995

TAX MAP
TOWNSHIP OF BERKELEY HEIGHTS
UNION COUNTY NEW JERSEY
SCALE: 1"=20'
DECEMBER 1994
MICHAEL THOMAS ANGELINE, L.S.
N.J. P.L.S. LIC. No. 14156
MASER SOSINSKI & ASSOC., P.A.
VICTORIA PLAZA, 30 FRENEAU AVENUE
MATAWAN, N.J. 07747