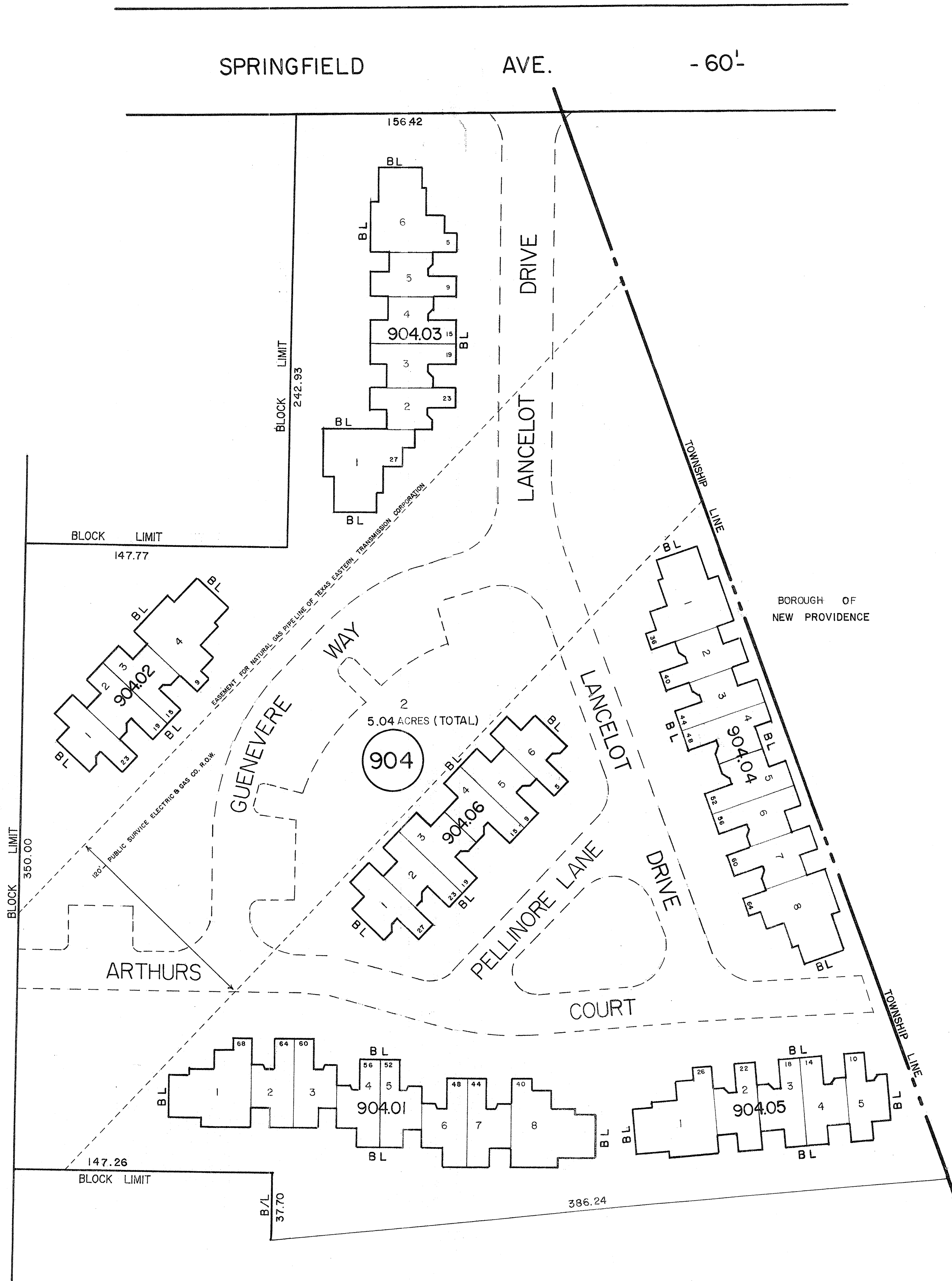
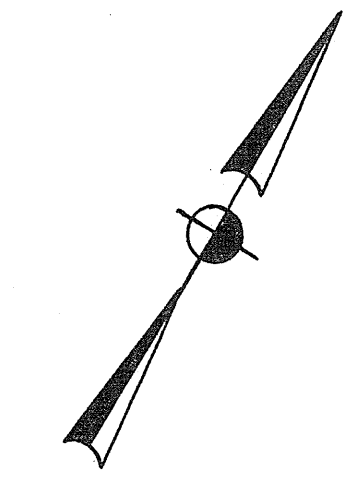


REVISIONS

DATE	NAME	NO.
DEC. 31, 2007	WERNER A. MALL, P.L.S.	37201



NEW JERSEY DEPARTMENT OF THE TREASURY
 DIVISION OF TAXATION
 LOCAL PROPERTY BRANCH
 APPROVED AS A TAX MAP PURSUANT TO THE
 PROVISIONS OF CHAPTER 176, LAWS OF 1973, ETC.
 FOR THE DISTRICT OF TAXATION

W. J. Sershinger

BY: _____ P.E. & L.S.
 LIC. # 15434 CHIEF, ENGINEERING SECTION
 DATE: 11.15.1986 SERIAL NO. 863

TAX MAP
 TOWNSHIP OF BERKELEY HEIGHTS
 UNION COUNTY, NEW JERSEY
 SCALE 1"=40' NOV. 24, 1986
HOWARD J. SHERSHINGER, P.E. & L.S. 16201
 TOWNSHIP ENGINEER