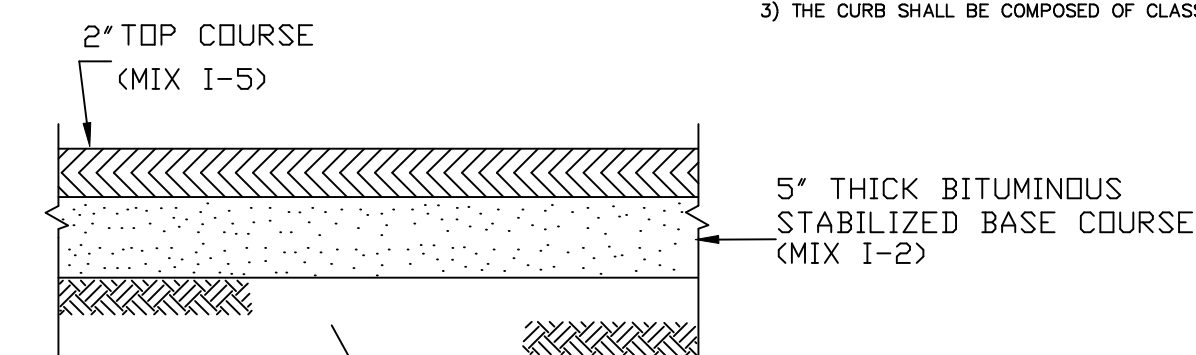
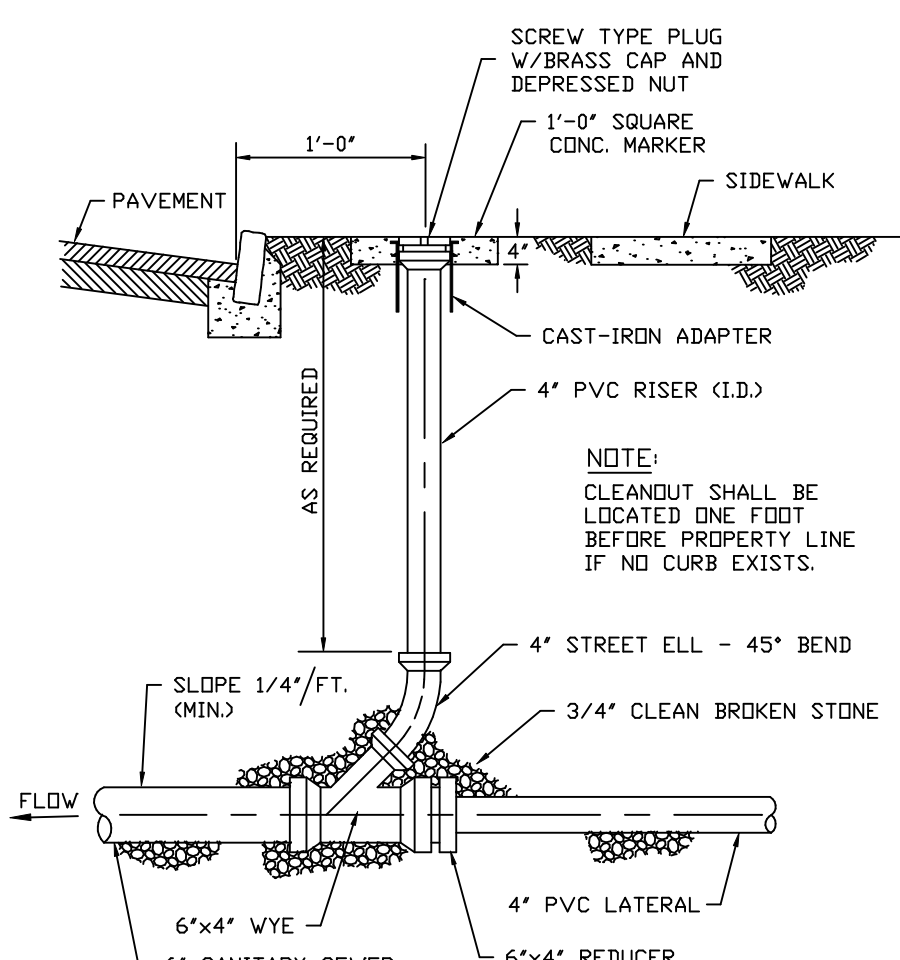


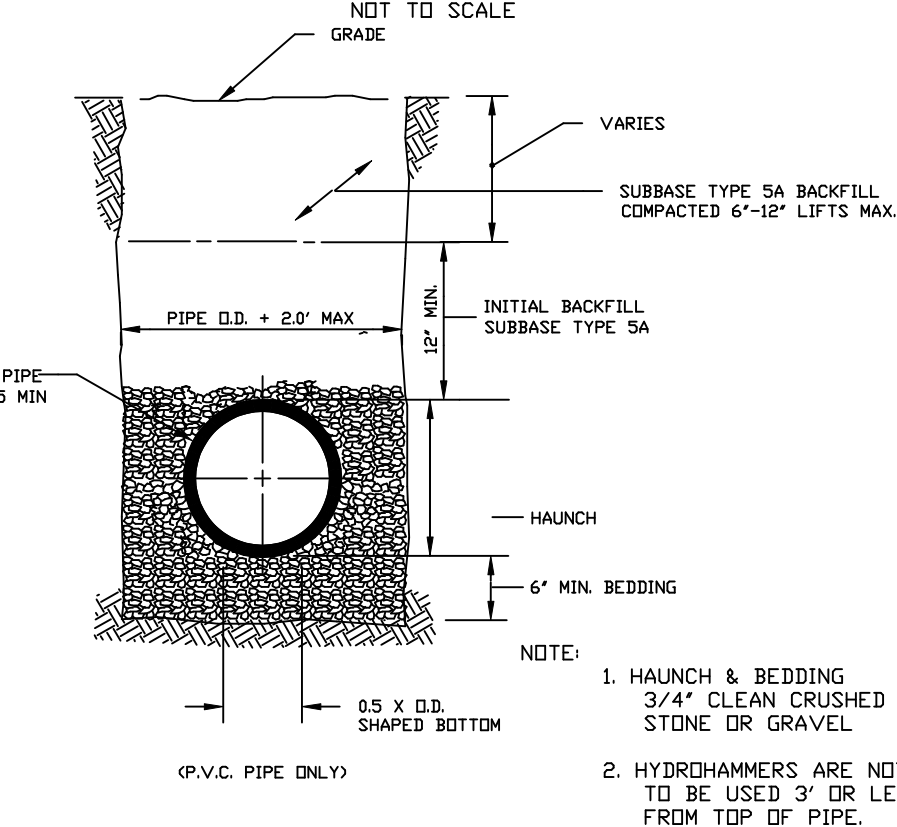
BELGIAN BLOCK CURB DETAIL
(IN PARKING LOT)



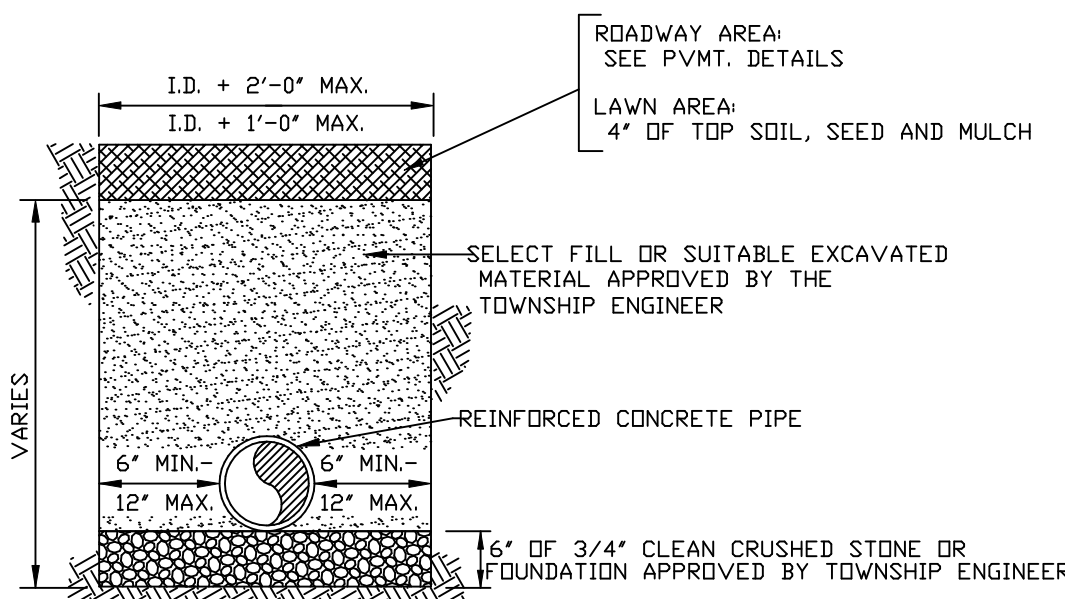
TYPICAL PAVEMENT SECTION



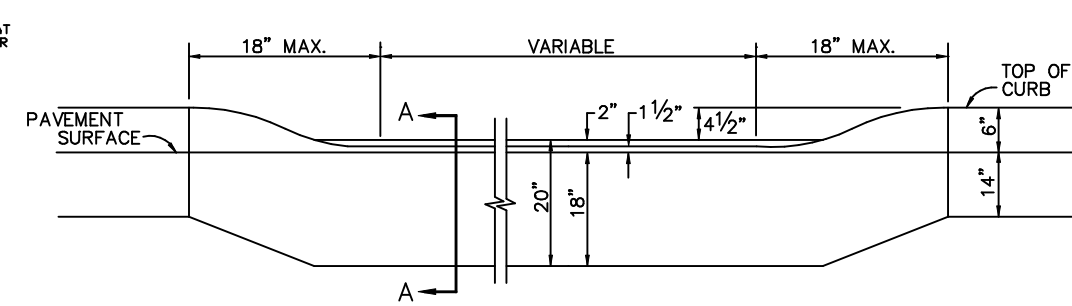
STANDARD CLEANOUT DETAIL



STANDARD PIPE BEDDING FOR P.V.C. PIPE

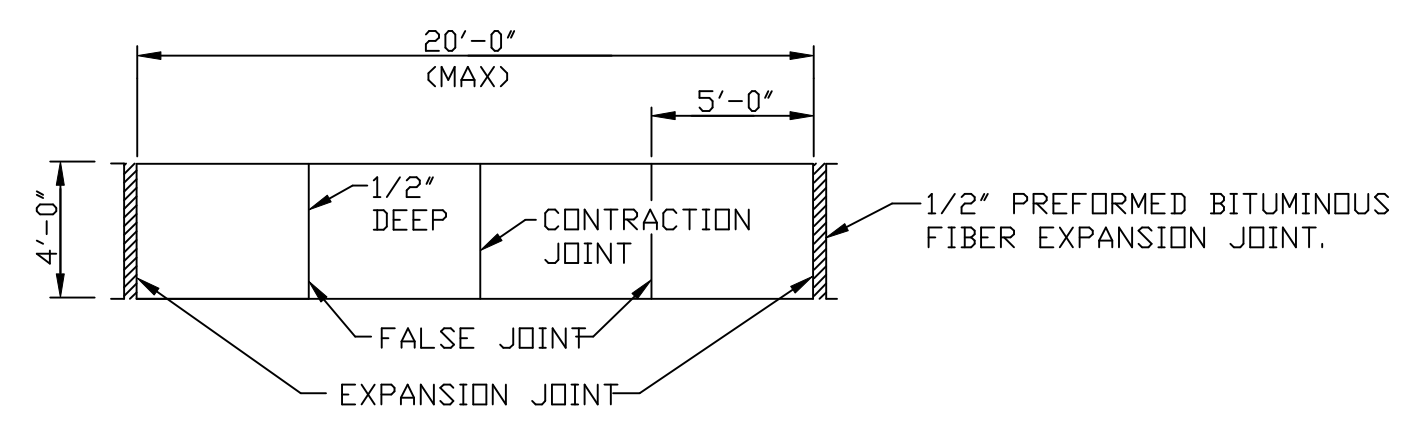


TYPICAL STORM SEWER TRENCH



DEPRESSED CURB AT DRIVEWAYS
SOUTH AVENUE CURB

- NOTES:
- 1) EXPANSION JOINTS ALTERNATE EVERY 10 FEET WITH CONSTRUCTION JOINTS. EXPANSION JOINTS SHALL BE FILLED WITH PREFORMED BITUMINOUS-IMPREGATED FIBER JOINT FILLER RECESSED 1/4" FROM THE FACE AND TOP OF THE CURB. SUCH JOINTS SHALL BE INSTALLED BETWEEN CURB AND INLET HEADS.
 - 2) ALL JOINTS SHALL EXTEND THE FULL 20" DEPTH OF THE CURB.
 - 3) THE CURB SHALL BE COMPOSED OF CLASS "B" CONCRETE.



CONCRETE SIDEWALK DETAIL

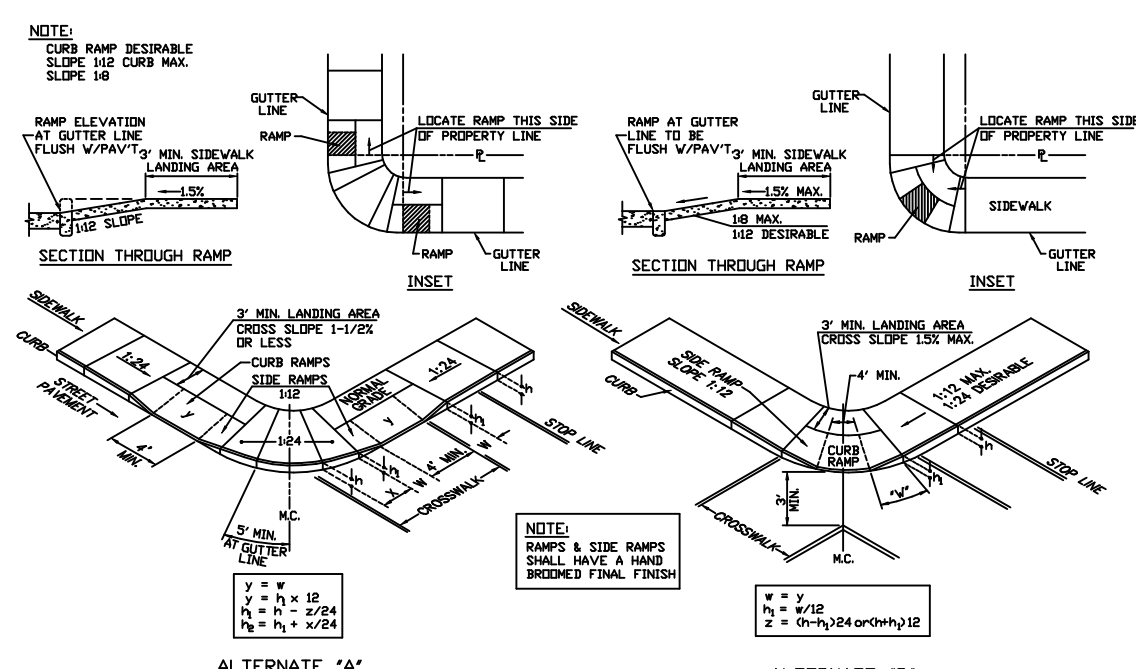
- NOTES:
1. DIRECTION OF SLOPE AND GRADE TO BE AS SHOWN ON GRADING PLANS.

CONCRETE SIDEWALK DETAIL

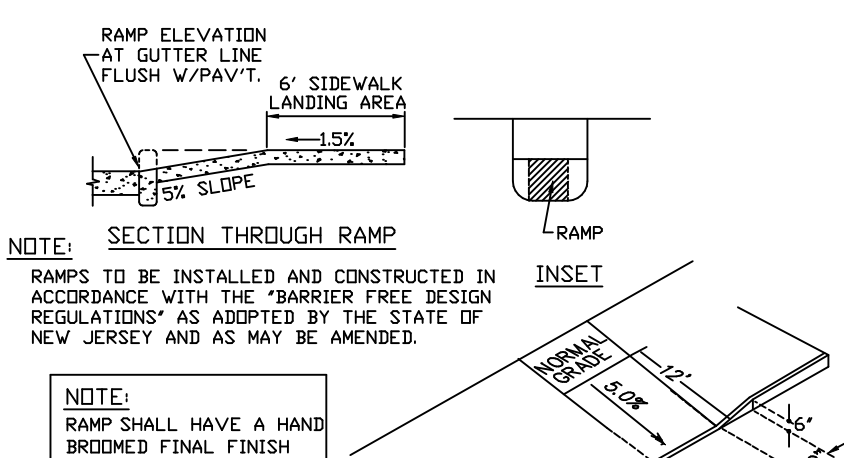


R1-1 30"x30" 1 POST

BOLLARD DETAILS

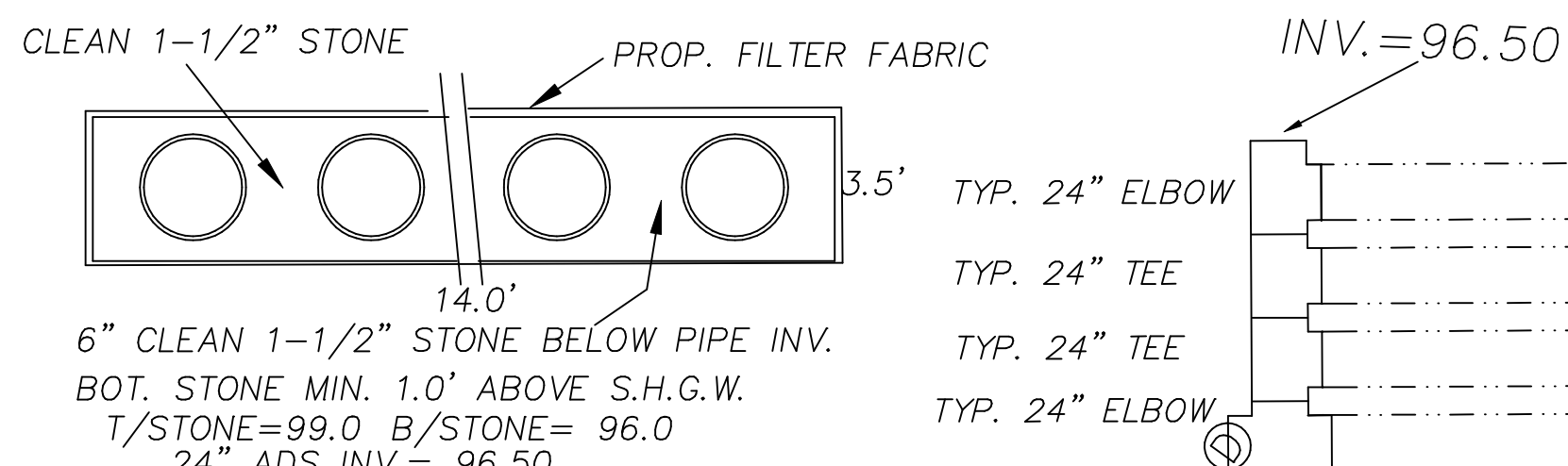


PHYSICALLY HANDICAPPED CURB RAMP

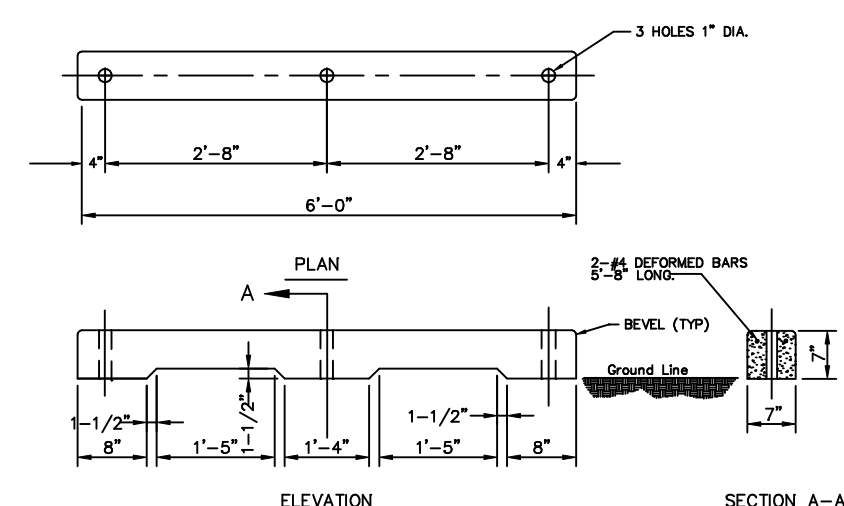


PHYSICALLY HANDICAPPED RAMP

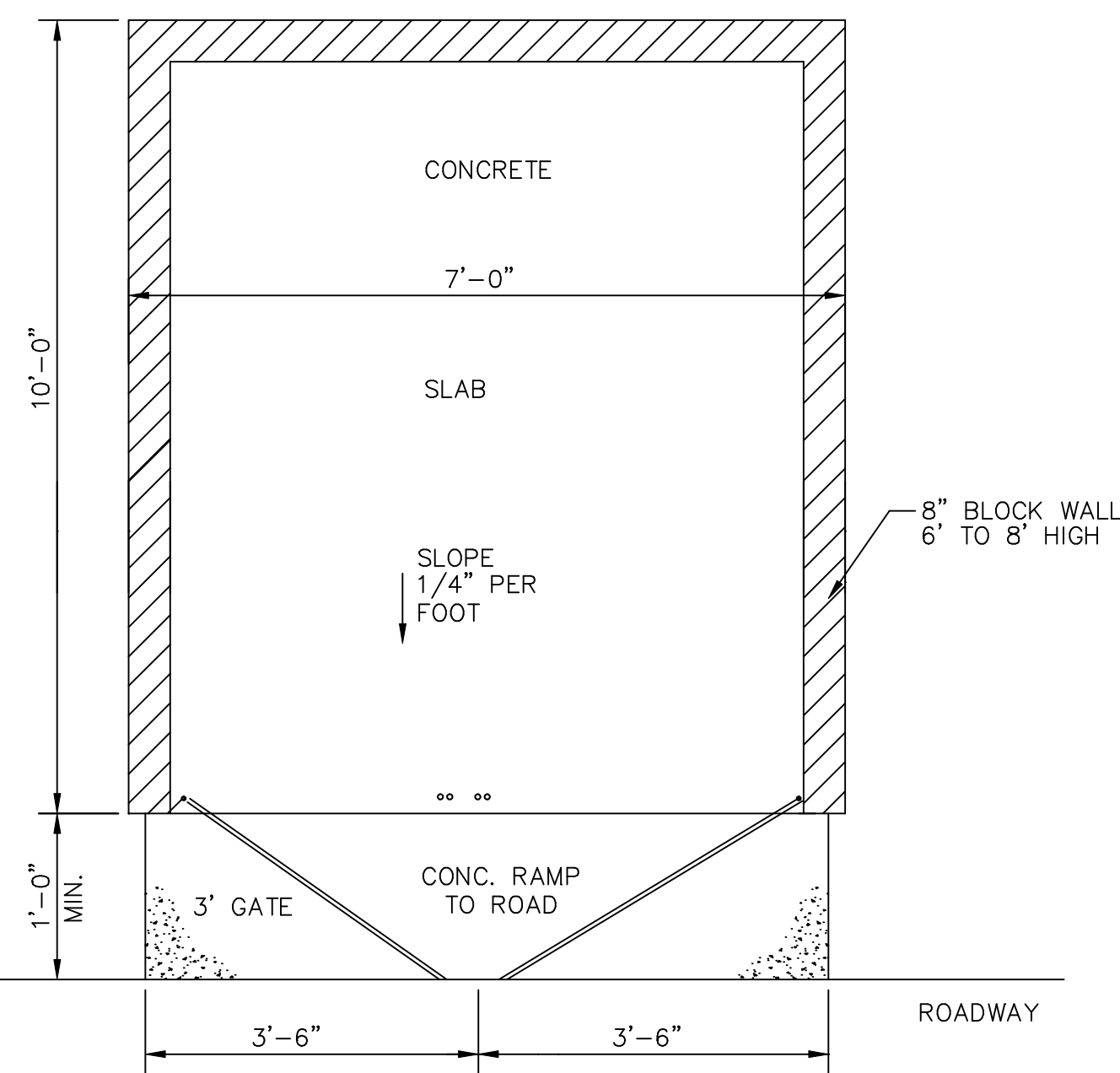
CONCRETE PAD DETAIL



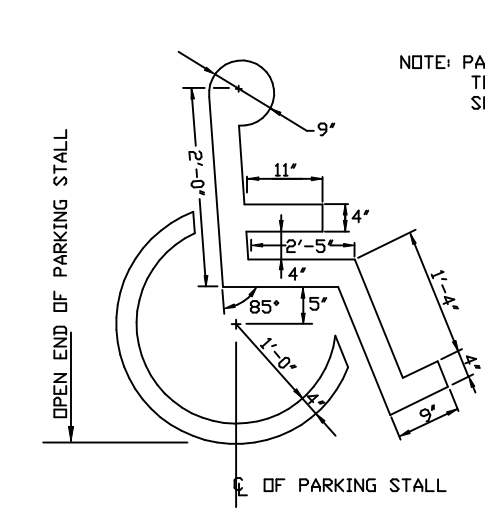
PROP. FILTER FABRIC
CLEAN 1-1/2" STONE
6" CLEAN 1-1/2" STONE BELOW PIPE INV.
BOT. STONE MIN. 1.0' ABOVE S.H.G.W.
T/STONE=99.0 B/STONE= 96.0
24" ADS INV.= 96.50



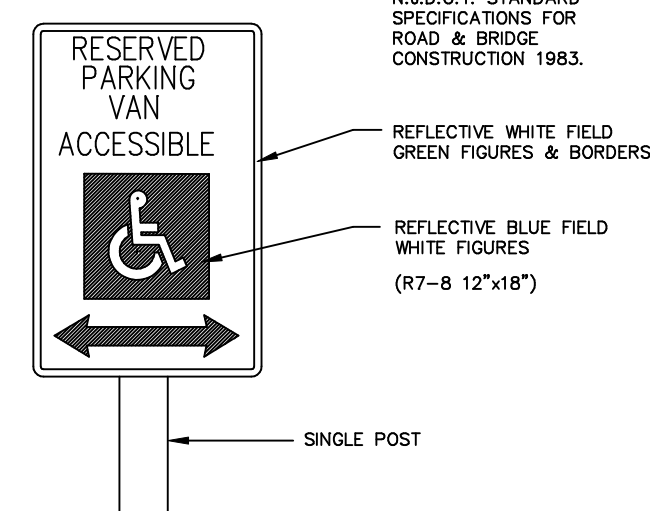
CONCRETE WHEEL STOP DETAIL



TRASH ENCLOSURE
(SEE ARCHITECTURAL PLANS)

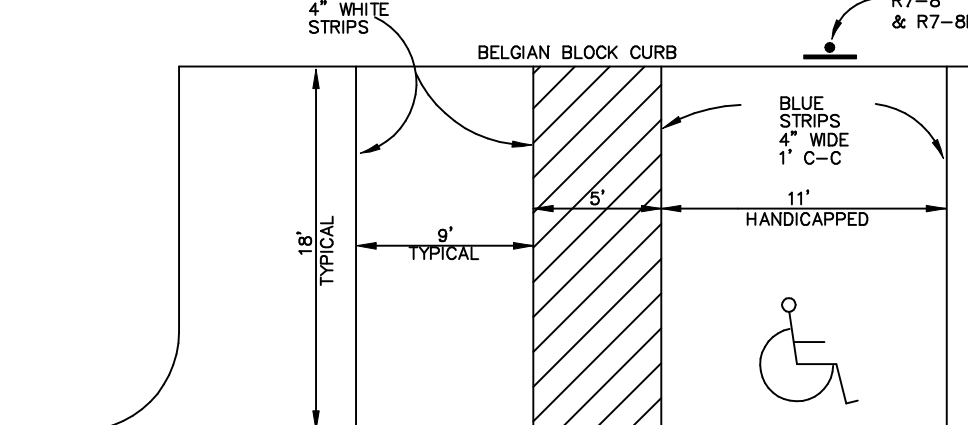


- NOTES:
- 1) ALL HANDICAP LINE STRIPING, STALL DIMENSIONS AND SYMBOLS ARE TO BE A.D.A. AND TOWNSHIP COMPLIANT.



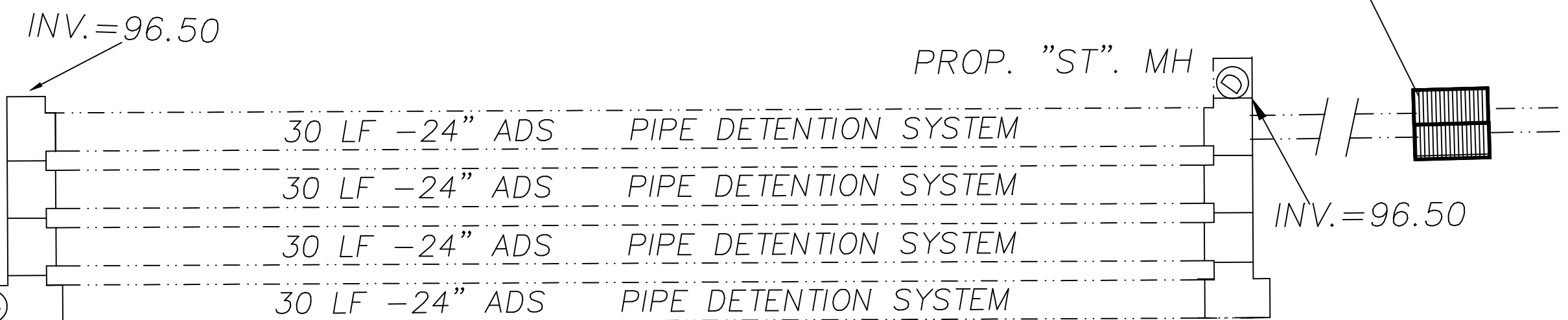
HANDICAPPED PARKING SYMBOL
HANDICAPPED PARKING SIGN "E"

R7-8P
\$ 250 1ST OFFENSE
SUBSEQUENT OFFENSES
\$250 MIN. AND/OR
UP TO 90 DAYS
COMMUNITY SERVICE
TOW-AWAY ZONE

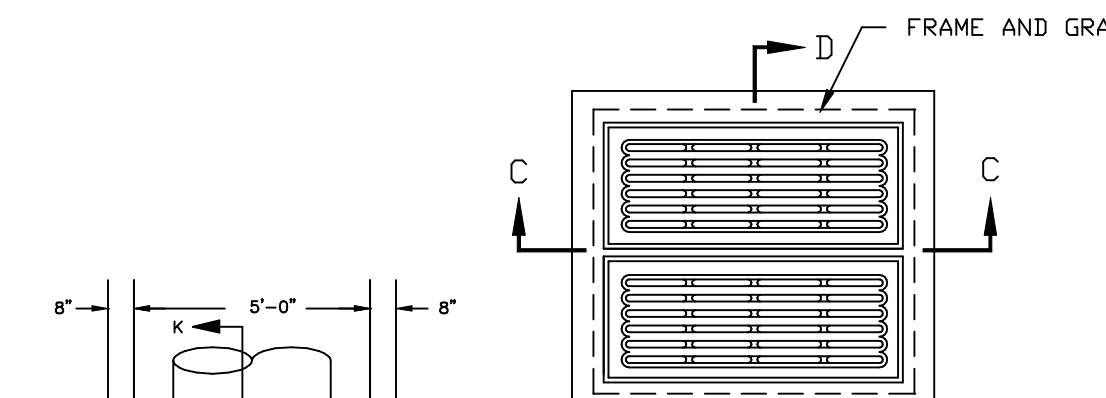


PARKING SPACE DETAIL

PROP. OUTLET STRUCTURE
GR-100.60
INV.-96.50

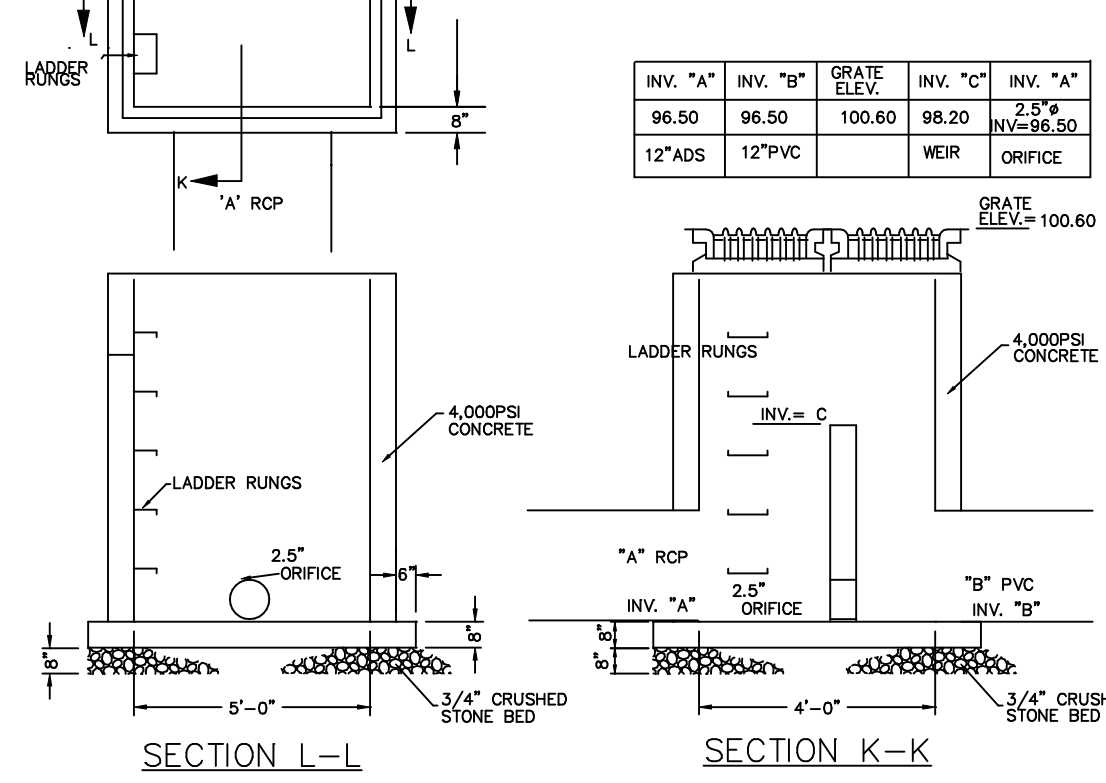


PROP. "ST" MH



INLET FRAME AND GRATES

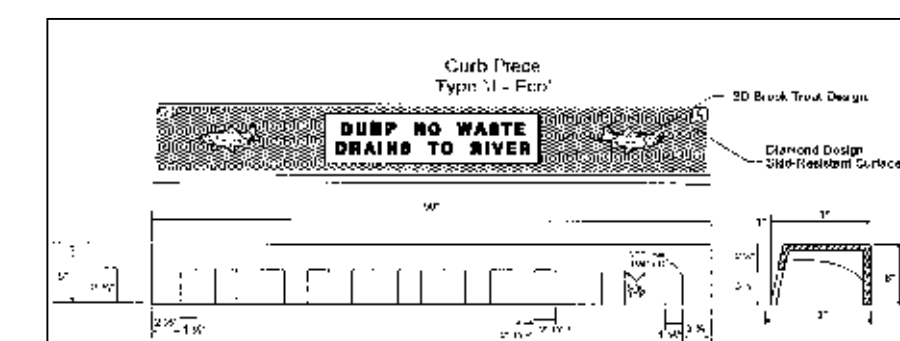
- GENERAL NOTES:
1. FILTER TO BE H.J.S.D.T. CLASS "C" CONCRETE.
 2. INVERT TO BE CLASS "C" CONCRETE.
 3. IF WALL CONSTRUCTION IS OTHER THAN CONCRETE, THE WALLS SHALL BE PLASTERED BOTH INSIDE AND OUTSIDE WITH 1/2" THICK CONCRETE PLASTER.
 4. FRAME AND GRATE TO BE NO. 3425 AS MANUFACTURED BY CAMPBELL FOUNDRY CO. OR EQUAL. IF GRATE LIES WITHIN CURB, THE GRATE SHALL BE PLASTERED WITH 1/2" THICK CONCRETE PLASTER.
 5. PROVIDE 7/8" DIA. ALUM. LADDER RUNGS @ 10' CTRS. MAX. FOR STRAIGHT CURB.
 6. ALL PRECAST STRUCTURES TO RECEIVE BITUMINOUS TAR COAT OUTSIDE ONLY.
 7. ALL STORM SEWER PIPE SHALL HAVE A 6" STONE BEDDING TO 1/2 DIAMETER OF PIPE.



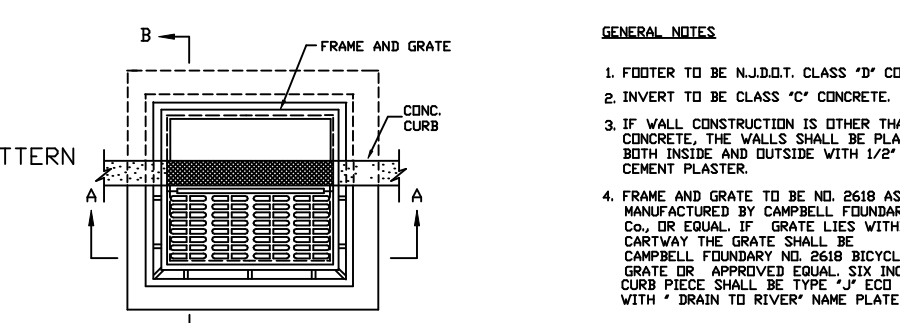
OUTLET CONTROL STRUCTURE

- NOTES:
1. CONCRETE SHALL CONTAIN 4% TO 7% AIR ENTRAINMENT CLASS "B".
 2. SIX (6") INCH CURB FACE, TWP. ROADS, 8" ALONG COUNTY ROADS.
 3. CONSTRUCTION JOINTS EVERY 10'.
 4. 1/2" EXPANSION JOINT OF NON-EXTRUDABLE FIBRILUS, BITUMINOUS MATERIAL SHALL BE PLACED ON 10' CENTERS MAX. FOR STRAIGHT CURB.

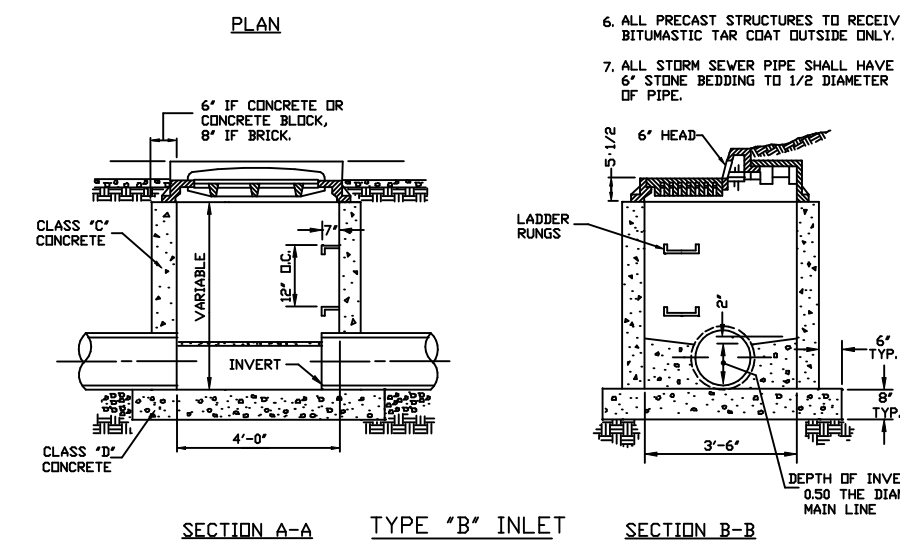
CONCRETE CURB DETAIL
(ALONG SOUTH SIDE OF PARKING LOT)



CURB NO WASTE DRAINS TO RIVER



TYPE "B" INLET



TYPE "A" INLET

- GENERAL NOTES:
1. FILTER TO BE H.J.S.D.T. CLASS "C" CONCRETE.
 2. INVERT TO BE CLASS "C" CONCRETE.
 3. IF WALL CONSTRUCTION IS OTHER THAN CONCRETE, THE WALLS SHALL BE PLASTERED BOTH INSIDE AND OUTSIDE WITH 1/2" THICK CONCRETE PLASTER.
 4. FRAME AND GRATE TO BE NO. 3425 AS MANUFACTURED BY CAMPBELL FOUNDRY CO. OR EQUAL.
 5. PROVIDE 7/8" DIA. ALUM. LADDER RUNGS @ 10' CTRS. MAX. FOR STRAIGHT CURB.
 6. ALL STORM SEWER PIPE SHALL HAVE 6" STONE BEDDING PLUS 1/2" PIPE.

| PREPARED BY: | REVISIONS | DETAIL SHEET |
|---|-----------------|---|
| EDWARD S. DEC | 1 Dec. 11, 2019 | 495 - 497 SPRINGFIELD AVENUE TOWNSHIP OF BERKELEY HEIGHTS, UNION CO., N.J. BEING ALSO KNOWN AS LOTS 14 & 15, BLOCK 206 AS DESIGNATED ON THE TAX MAP OF THE TOWNSHIP OF BERKELEY HEIGHTS, UNION CO., N.J. GUARRIELLO & DEC ASSOC. LLC CIVIL ENGINEERS AND LAND SURVEYORS 131 NORTH MICHIGAN AVENUE P.O. BOX 208 KENILWORTH, N.J. 07033 TEL-908-620-1139 FAX-908-620-1102 |
| | 2 Jan. 3, 2020 | |
| | 3 APR. 2, 2021 | |
| N.J. PROFESSIONAL ENGINEER AND LAND SURVEYOR # 24GB03897400 CERTIFICATE OF AUTH. # 24GA28048500 | SCALE 1"=10' | JOB # B50-10 DATE Sept. 14, 2019 SHEET NO: 5 OF 5 |