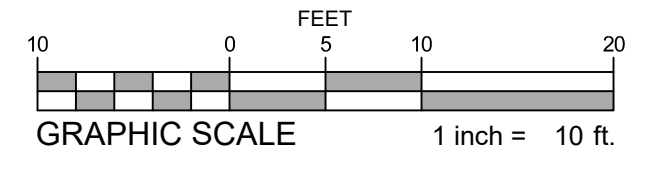


- END UNIT 'A' - (KINKADE)  
 TYPICAL UNIT PLANT QUANTITIES**
- (1) UPRIGHT EVERGREEN
  - (7) SHRUB A - MEDIUM DECIDUOUS SHRUB
  - (14) SHRUB B - MEDIUM EVERGREEN SHRUB
  - (8) SHRUB C - SMALL DECIDUOUS SHRUB
  - (5) SHRUB D - SMALL EVERGREEN SHRUB
  - (24) PERENNIALS
  - (12) ORNAMENTAL GRASSES OR GROUNDCOVER

- INTERIOR UNIT 'A' - (VASSAR)  
 TYPICAL UNIT PLANT QUANTITIES**
- (1) UPRIGHT EVERGREEN
  - (2) SHRUB A - MEDIUM DECIDUOUS SHRUB
  - (9) SHRUB B - MEDIUM EVERGREEN SHRUB
  - (3) SHRUB C - SMALL DECIDUOUS SHRUB
  - (3) SHRUB D - SMALL EVERGREEN SHRUB
  - (12) SHRUB D - SMALL EVERGREEN SHRUB
  - (10) PERENNIALS
  - (14) ORNAMENTAL GRASSES OR GROUNDCOVER

- INTERIOR UNIT 'B' - (STRATHMERE)  
 TYPICAL UNIT PLANT QUANTITIES**
- (2) SHRUB A - MEDIUM DECIDUOUS SHRUB
  - (9) SHRUB B - MEDIUM EVERGREEN SHRUB
  - (3) SHRUB C - SMALL DECIDUOUS SHRUB
  - (5) PERENNIALS
  - (10) ORNAMENTAL GRASSES OR GROUNDCOVER

- END UNIT 'B' - (BUCKNELL)  
 TYPICAL UNIT PLANT QUANTITIES**
- (4) SHRUB A - MEDIUM DECIDUOUS SHRUB
  - (9) SHRUB B - MEDIUM EVERGREEN SHRUB
  - (8) SHRUB D - SMALL EVERGREEN SHRUB
  - (10) PERENNIALS
  - (9) ORNAMENTAL GRASSES OR GROUNDCOVER



**TYPICAL UNIT PLANTINGS**  
 SCALE: 1"=10'

### PLANT SCHEDULE - TYPICAL UNIT PLANTINGS

UPRIGHT EVERGREEN TREE			
SYMBOL	QUANTITY	SPECIES/COMMON NAME	SIZE
	8	Ilex x aquiperny/ Meschick / Dragon Lady Holly	5'-6" HT
		Juniperus chinensis 'Blue Point' or 'Spartan' / Juniper	5'-6" HT
		Rosa glauca 'Conrad' / Blarlett Spirea	5'-6" HT
		Thuja occidentalis 'Emerald Green'	5'-6" HT
	8		

LARGE-MEDIUM SHRUB A (DECIDUOUS) SELECT ONE SPECIES ONLY PER PLANT GROUPING			
SYMBOL	QUANTITY	SPECIES/COMMON NAME	SIZE
	34	Clethra alnifolia 'Ruby Spice' / Summersweet Clethra	30" MIN. HT
		Cornus sericea 'Baikhal' / Ivory Halo Red Twig Dogwood	30" MIN. HT
		Hydrangea macrophylla 'Endless Summer' TM / Hydrangea	30" MIN. HT
		Hydrangea quercifolia / Oakleaf Hydrangea	30" MIN. HT
		Physocarpus opulifolius 'Summer Wine' / Ninebark	30" MIN. HT
		Rosa 'Knock out' varieties / Pink, Sunny, & Double Knock Out Rose	30" MIN. HT
		Weigela florida 'Spilled Wine' / Spilled Wine Weigela	30" MIN. HT
	34		

LARGE-MEDIUM SHRUB B (EVERGREEN) SELECT ONE SPECIES ONLY PER PLANT GROUPING			
SYMBOL	QUANTITY	SPECIES/COMMON NAME	SIZE
	59	Abelia x grandiflora	24" MIN. HT
		Ilex crenata 'Compacta' / Japanese Holly	24" MIN. HT
		Daphne x burkwoodii 'Coral Medal' / Daphne	24" MIN. HT
		Ilex glabra 'Densa' or 'Shamrock' / Inkberry	24" MIN. HT
		Ilex x 'Ming' / China Boy & China Girl Holly	24" MIN. HT
		Leucothoe axillaris / Coastal Leucothoe	24" MIN. HT
		Pieris japonica 'Mountain Fire' / Mountain Fire Japanese Andromeda	24" MIN. HT
		Rhododendron 'PJM' / PJM Rhododendron	24" MIN. HT
		Rhus laurifolia 'Otto Luyken' / Otto Luyken Cherry Laurel	24" MIN. HT
	59		

SMALL SHRUB C (DECIDUOUS) SELECT ONE SPECIES ONLY PER PLANT GROUPING			
SYMBOL	QUANTITY	SPECIES/COMMON NAME	SIZE
	43	Caryopteris 'Blue Mist' or 'Dark Knight' / Dwarf Bluebeard	18" MIN. HT
		Itea virginica 'Little Henry' / Dwarf Virginia Sweetpire	18" MIN. HT
		Fothergilla gardenii / Dwarf Fothergilla	18" MIN. HT
		Hesperis x 'Hydrot' / St. Johns Wort	18" MIN. HT
		Physocarpus opulifolius 'Little Devil' / Ninebark	18" MIN. HT
		Rosa 'Sunblaze' varieties/ Yellow, White, Pink, Red, Salmon	18" MIN. HT
	43		

SMALL SHRUB D (EVERGREEN) SELECT ONE SPECIES ONLY PER PLANT GROUPING			
SYMBOL	QUANTITY	SPECIES/COMMON NAME	SIZE
	70	Aspidistra 'Incoron' varieties / Dwarf Evergreen Aspidistra	18" MIN. HT
		Buxus microphylla 'Winter Gem' / Winter Gem Boxwood	18" MIN. HT
		Ilex crenata 'Soft Touch' / Dwarf Japanese Holly	18" MIN. HT
		Pinus strobus 'Blue Shag' / Dwarf Pine	18" MIN. HT
	70		

PERENNIALS SELECT ONE SPECIES ONLY PER PLANT GROUPING			
SYMBOL	QUANTITY	SPECIES/COMMON NAME	SIZE
	85	Alchemilla mollis / Lady's Mantle	2 QT.
		Astilbe arendsii / False Spirea	2 QT.
		Bergenia cordifolia / Heartleaf Bergenia	2 QT.
		Coreopsis verticillata / Threadleaf Coreopsis	2 QT.
		Heuchera varieties/ Coralbells	2 QT.
		Hosta varieties	2 QT.
		Nepeta x exoniensis 'Walker's Low' / Walker's Low Catmint	2 QT.
		Rudbeckia fulgida 'Black-eyed Susan'	2 QT.
		Salvia sylvestris varieties	2 QT.
		Sedum varieties	2 QT.
	85		

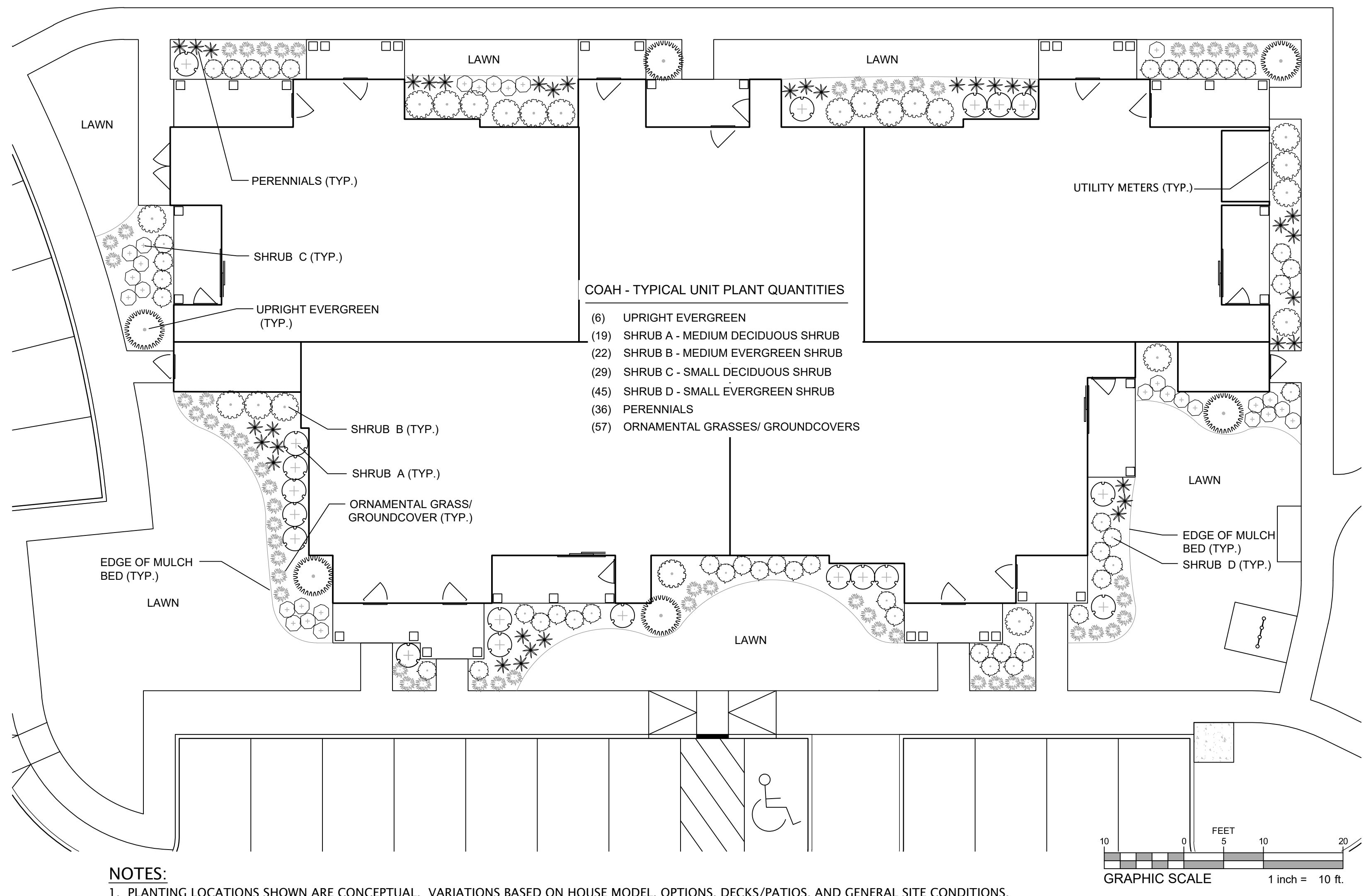
  

ORNAMENTAL GRASS OR GROUNDCOVER SELECT ONE SPECIES ONLY PER PLANT GROUPING			
SYMBOL	QUANTITY	SPECIES/COMMON NAME	SIZE
	102	Calamagrostis x acutiflora 'Karl Foerster' / Feather Reed Grass	1 GAL.
		Hakonechloa macra / Hakone Grass	1 GAL.
		Juniperus horizontalis 'Wiltonii' / Blue Rug Juniper	1 GAL.
		Liriodie muscari varieties / Lilywort	1 QT.
		Pennisetum alopecuroides 'Hameln' / Hameln Fountain Grass	1 GAL.
	102		

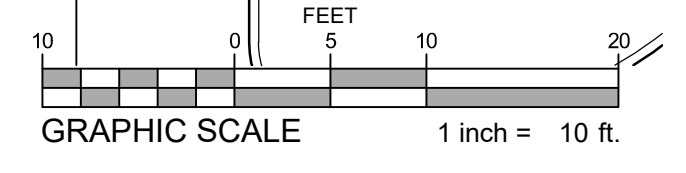
**NOTES:**  
 1. PLANTING LOCATIONS SHOWN ARE CONCEPTUAL. VARIATIONS BASED ON HOUSE MODEL, OPTIONS, DECKS/PATIOS, AND GENERAL SITE CONDITIONS.  
 2. PLANTINGS ARE IN ADDITION TO STREET TREES, BUFFER AND OPEN SPACE PLANTINGS. SPECIES TO BE DETERMINED BASED ON MOST SUITABLE PLANT FOR CONDITION. PLANTS SHALL BE FROM LIST PROVIDED.  
 3. PROPOSED PLANT MATERIAL MAY BE SUBSTITUTED WITH A SIMILAR PLANT PRIOR TO INSTALLATION. SUBJECT TO APPROVAL BY LANDSCAPE ARCHITECT AND TOWNSHIP.

### TYPICAL UNIT PLANTING TABULATION

CARRIAGE HOMES	
<b>END UNIT 'A'</b> (11 total Kinkade units)	
(1) Upright Evergreen Trees (x 11 Kinkade Units)	= 11 Total Upright Evergreen Trees
(7) Shrub 'A' (x 11 Kinkade Units)	= 77 Total Shrub 'A'
(14) Shrub 'B' (x 11 Kinkade Units)	= 154 Total Shrub 'B'
(8) Shrub 'C' (x 11 Kinkade Units)	= 88 Total Shrub 'C'
(5) Shrub 'D' (x 11 Kinkade Units)	= 55 Total Shrub 'D'
(24) Perennials (x 11 Kinkade Units)	= 264 Total Perennials
(12) Ornamental Grasses or Groundcover (x 11 Kinkade Units)	= 132 Total Ornamental Grasses or Groundcover
<b>END UNIT 'B'</b> (11 total Bucknell units)	
(4) Shrub 'A' (x 11 Bucknell Units)	= 44 Total Shrub 'A'
(9) Shrub 'B' (x 11 Bucknell Units)	= 99 Total Shrub 'B'
(8) Shrub 'D' (x 11 Bucknell Units)	= 88 Total Shrub 'D'
(10) Perennials (x 11 Bucknell Units)	= 110 Total Perennials
(9) Ornamental Grasses or Groundcover (x 11 Bucknell Units)	= 99 Total Ornamental Grasses or Groundcover
<b>INTERIOR UNIT 'A'</b> (9 total Vassar units)	
(1) Upright Evergreen Trees (x 9 Vassar Units)	= 9 Total Upright Evergreen Trees
(2) Shrub 'A' (x 9 Vassar Units)	= 18 Total Shrub 'A'
(5) Shrub 'B' (x 9 Vassar Units)	= 45 Total Shrub 'B'
(3) Shrub 'C' (x 9 Vassar Units)	= 27 Total Shrub 'C'
(12) Shrub 'D' (x 9 Vassar Units)	= 108 Total Shrub 'D'
(10) Perennials (x 9 Vassar Units)	= 90 Total Perennials
(14) Ornamental Grasses or Groundcover (x 9 Vassar Units)	= 126 Total Ornamental Grasses or Groundcover
<b>INTERIOR UNIT 'B'</b> (16 total Strathmere units)	
(2) Shrub 'A' (x 16 Strathmere Units)	= 32 Total Shrub 'A'
(9) Shrub 'B' (x 16 Strathmere Units)	= 144 Total Shrub 'B'
(3) Shrub 'C' (x 16 Strathmere Units)	= 48 Total Shrub 'C'
(5) Perennials (x 16 Strathmere Units)	= 80 Total Perennials
(10) Ornamental Grasses or Groundcover (x 16 Strathmere Units)	= 160 Total Ornamental Grasses or Groundcover
<b>COAH UNITS</b>	
<b>COAH BUILDINGS (2 total COAH Buildings)</b>	
(6) Upright Evergreen Trees (x 2 COAH)	= 12 Total Upright Evergreen Trees
(19) Shrub 'A' (x 2 COAH)	= 38 Total Shrub 'A'
(22) Shrub 'B' (x 2 COAH)	= 44 Total Shrub 'B'
(29) Shrub 'C' (x 2 COAH)	= 58 Total Shrub 'C'
(45) Shrub 'D' (x 2 COAH)	= 90 Total Shrub 'D'
(36) Perennials (x 2 COAH)	= 72 Total Perennials
(57) Ornamental Grasses or Groundcover (x 2 COAH)	= 114 Total Ornamental Grasses or Groundcover



- COAH - TYPICAL UNIT PLANT QUANTITIES**
- (6) UPRIGHT EVERGREEN
  - (19) SHRUB A - MEDIUM DECIDUOUS SHRUB
  - (22) SHRUB B - MEDIUM EVERGREEN SHRUB
  - (29) SHRUB C - SMALL DECIDUOUS SHRUB
  - (45) SHRUB D - SMALL EVERGREEN SHRUB
  - (36) PERENNIALS
  - (57) ORNAMENTAL GRASSES/ GROUNDCOVERS



**NOTES:**  
 1. PLANTING LOCATIONS SHOWN ARE CONCEPTUAL. VARIATIONS BASED ON HOUSE MODEL, OPTIONS, DECKS/PATIOS, AND GENERAL SITE CONDITIONS.  
 2. PLANTINGS ARE IN ADDITION TO STREET TREES, BUFFER AND OPEN SPACE PLANTINGS. SPECIES TO BE DETERMINED BASED ON MOST SUITABLE PLANT FOR CONDITION. PLANTS SHALL BE FROM LIST PROVIDED.  
 3. PROPOSED PLANT MATERIAL MAY BE SUBSTITUTED WITH A SIMILAR PLANT PRIOR TO INSTALLATION. SUBJECT TO APPROVAL BY LANDSCAPE ARCHITECT AND TOWNSHIP.

**TYPICAL COAH UNIT PLANTINGS**  
 SCALE: 1"=10'

**ESE CONSULTANTS**  
 ENGINEERING • PLANNING • SURVEYING • ENVIRONMENTAL  
 ESE Consultants, Inc.  
 100 Willow Brook Road • Suite 200 • Freehold, NJ 07728  
 T: 732-446-9446  
 New Jersey Certificate of Authorization No. 246A2799900

NO.	DATE	DESCRIPTION
1.	10/14/19	REVISED AFFORDABLE BUILDINGS TO INCLUDE BIKE STORAGE ROOMS
2.	3/16/20	REVISED TO ADDRESS SBAER SPT. BEAR COMMENTS (REV. 12/24/19) AND FOR 303 SUBMISSION
3.	5/17/20	REVISED TO ADDRESS SBAER SPT. BEAR COMMENTS (REV. 3/17/20)
4.	5/17/20	REVISED TO ADDRESS SBAER SPT. BEAR COMMENTS (REV. 3/17/20)
5.	10/08/20	REVISED TO ADDRESS TOWNSHIP REVIEW COMMENTS AND RESOLUTION CONDITIONS OF APPROVAL

New Jersey One Call  
 1 Corporate Plaza South  
 Freehold, NJ 08854  
 4-800-272-1000  
 or 81-1  
 www.nj1-call.org

**LANDSCAPE DETAILS AND NOTES II**  
 PRELIMINARY AND FINAL MAJOR SITE PLAN  
**HAMILTON AVENUE CAMPUS**  
 BLOCK 1301, LOT 19 (TAX MAP SHEET #13)  
 TOWNSHIP OF BERKELEY HEIGHTS, UNION COUNTY, NEW JERSEY

DATE: SEPT 30, 2019	SCALE: AS NOTED
DESIGN: ESE	DRAWN: LAC
JOB NO.: 4543	FILE NAME: 4543-10-DET-LAND
REF. NO.: SD09.04	
SHEET NO.: 22	OF 24