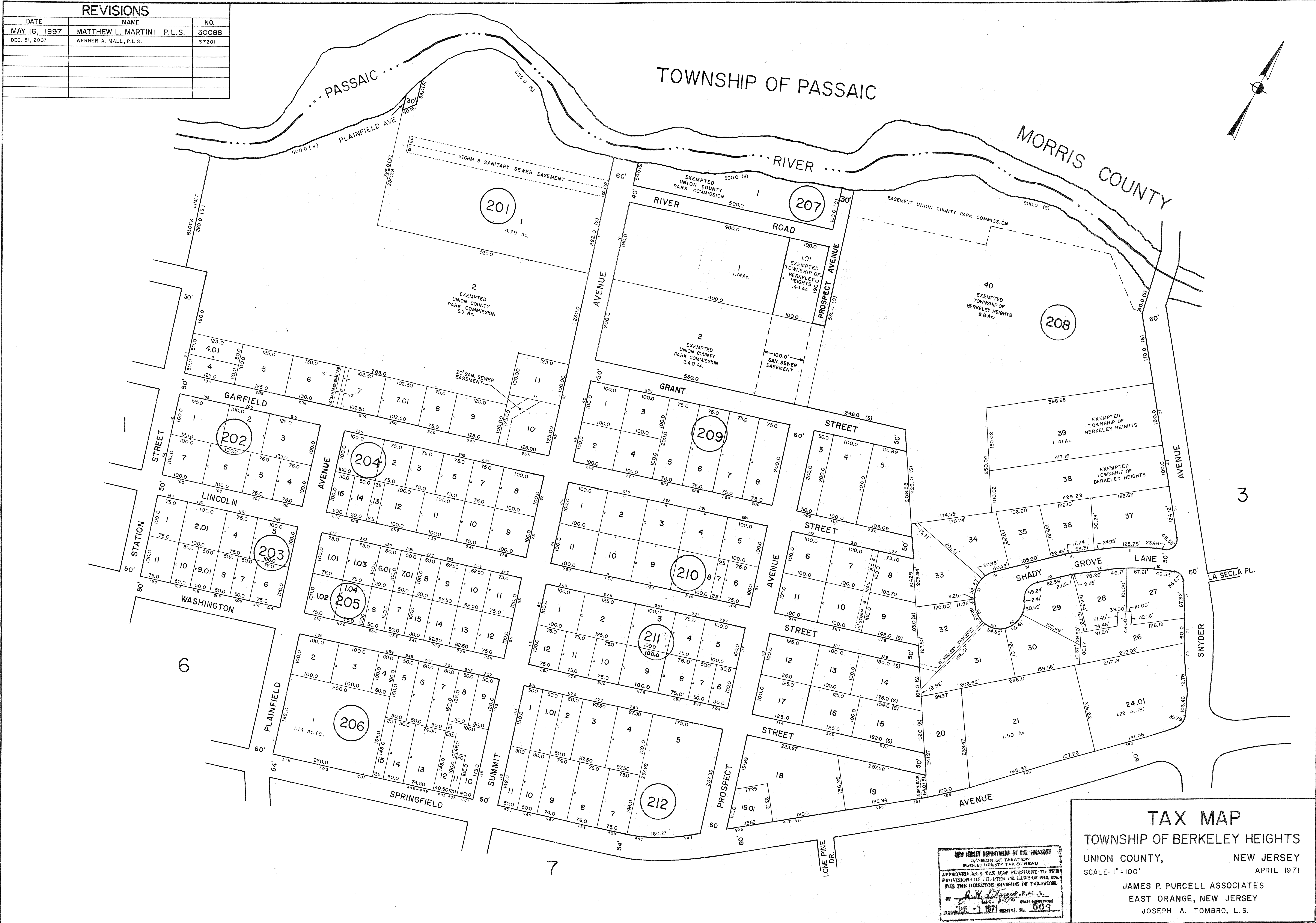


REVISIONS			
DATE	NAME		NO.
MAY 16, 1997	MATTHEW L. MARTINI P.L.S.		30088
DEC. 31, 2007	WERNER A. MALL, P.L.S.		37201



**TAX MAP**  
 TOWNSHIP OF BERKELEY HEIGHTS  
 UNION COUNTY, NEW JERSEY  
 SCALE: 1" = 100'  
 APRIL 1971  
 JAMES P. PURCELL ASSOCIATES  
 EAST ORANGE, NEW JERSEY  
 JOSEPH A. TOMBRO, L.S.

NEW JERSEY DEPARTMENT OF THE TREASURY  
 DIVISION OF TAXATION  
 PUBLIC UTILITY TAX BUREAU  
 APPROVED AS A TAX MAP PURSUANT TO THE  
 PROVISIONS OF CHAPTER 124.14 OF THE NEW  
 JERSEY STATUTES  
 BY *[Signature]* STATE ENGINEER  
 DATE: 1-1971 SERIAL No. 503