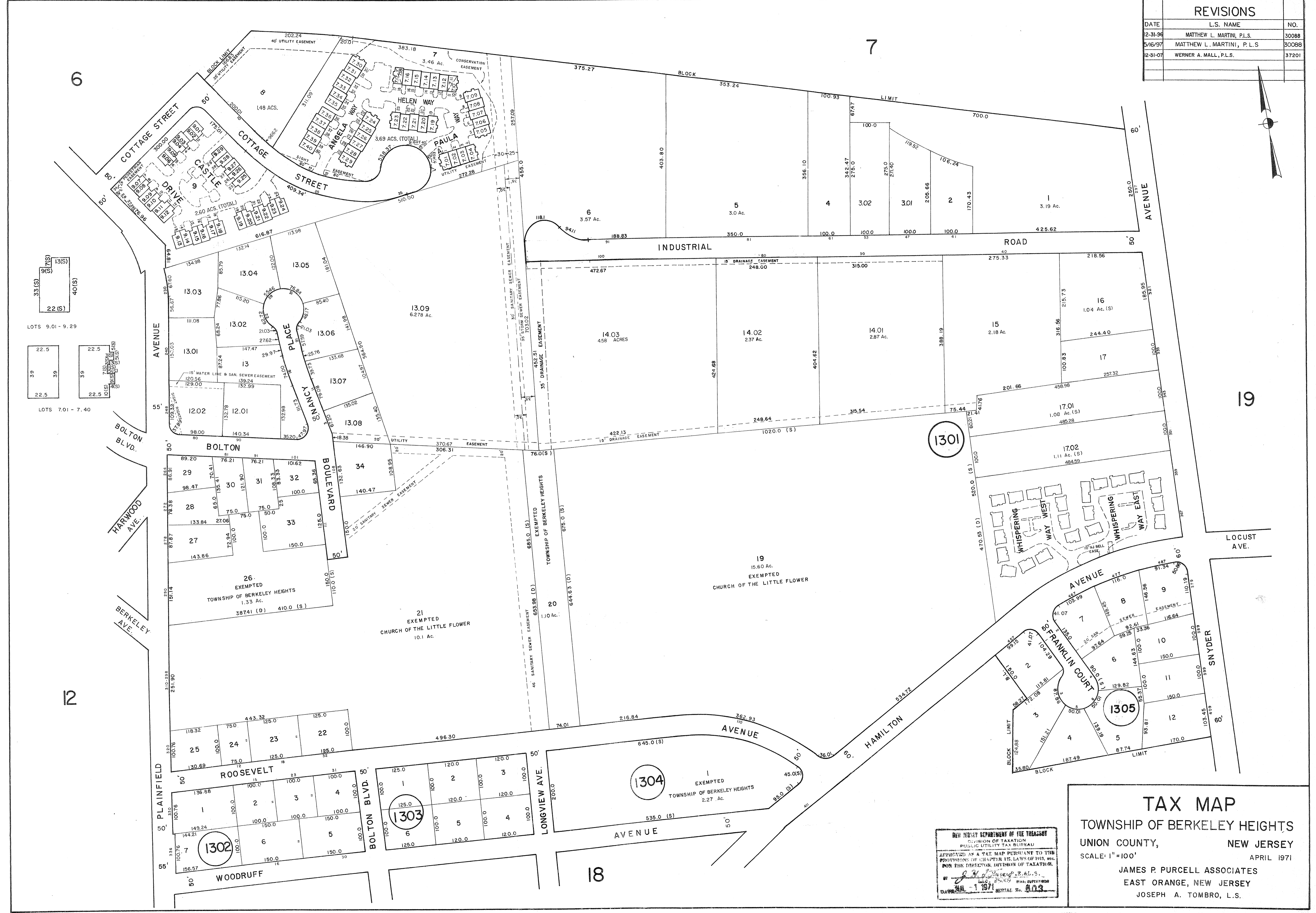
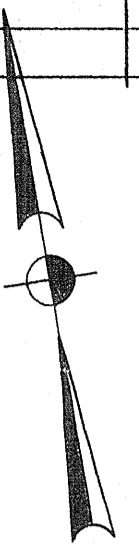


REVISIONS		
DATE	L.S. NAME	NO.
2-31-96	MATTHEW L. MARTINI, P.L.S.	30088
5/16/97	MATTHEW L. MARTINI, P.L.S.	30088
12-31-07	WERNER A. MALL, P.L.S.	37201



1301

1305

1304

1302

1303

NEW JERSEY DEPARTMENT OF THE TREASURY
 DIVISION OF TAXATION
 PUBLIC UTILITY TAX BUREAU
 APPROVED AS A TAX MAP PURSUANT TO THE
 PROVISIONS OF CHAPTER 122, LAWS OF 1915, ETC.
 FOR THE DIRECTOR, DIVISION OF TAXATION.
 BY: *[Signature]*
 DATE: 11-1-1971 SERIAL NO. 803

TAX MAP
 TOWNSHIP OF BERKELEY HEIGHTS
 UNION COUNTY, NEW JERSEY
 SCALE: 1" = 100'
 APRIL 1971
 JAMES P. PURCELL ASSOCIATES
 EAST ORANGE, NEW JERSEY
 JOSEPH A. TOMBO, L.S.