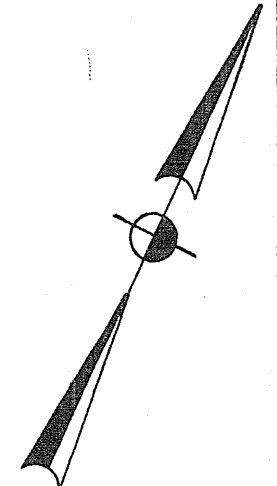
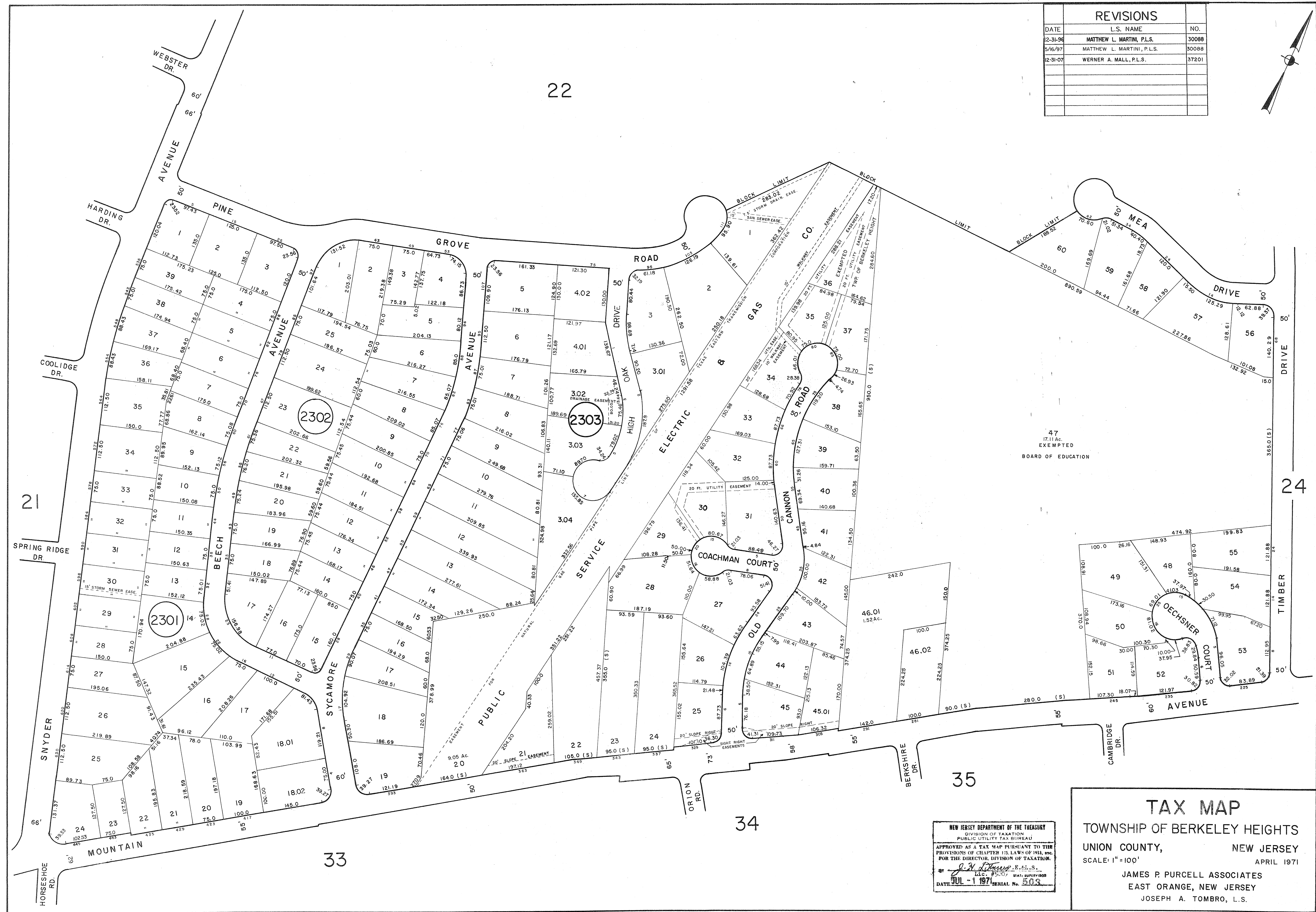


REVISIONS		
DATE	L.S. NAME	NO.
12-31-96	MATTHEW L. MARTINI, P.L.S.	30088
5/16/97	MATTHEW L. MARTINI, P.L.S.	30088
12-31-07	WERNER A. MALL, P.L.S.	37201



22



47
17.11 Ac.
EXEMPTED
BOARD OF EDUCATION

NEW JERSEY DEPARTMENT OF THE TREASURY
DIVISION OF TAXATION
PUBLIC UTILITY TAX BUREAU
APPROVED AS A TAX MAP PURSUANT TO THE
PROVISIONS OF CHAPTER 125, LAWS OF 1913, ETC.
FOR THE DIRECTOR, DIVISION OF TAXATION.
BY *J. A. Purcell*, P.L.S.
LIC. #500, STATE SUPERVISOR
DATE JUL - 1 1971 SERIAL No. 503

TAX MAP
TOWNSHIP OF BERKELEY HEIGHTS
UNION COUNTY, NEW JERSEY
SCALE: 1" = 100'
APRIL 1971
JAMES P. PURCELL ASSOCIATES
EAST ORANGE, NEW JERSEY
JOSEPH A. TOMBRO, L.S.