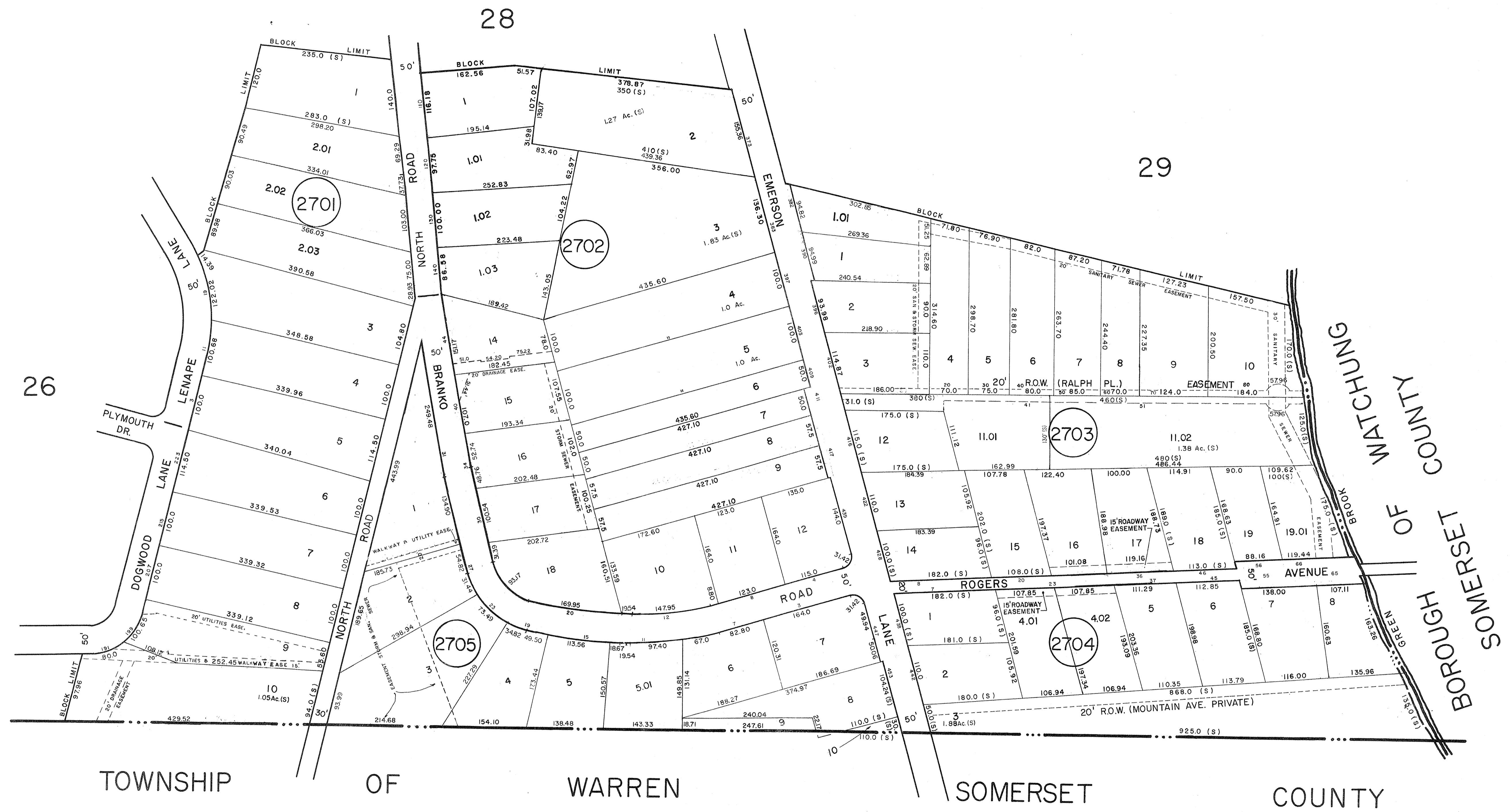


| REVISIONS | | |
|---------------|--|-------|
| DATE | NAME | NO. |
| DEC. 20, 1994 | MASER, SOSINSKI & ASSOCIATES, P.A. BY MICHAEL THOMAS ANGELINE, L.S. | 14156 |
| DEC. 31, 1996 | MATTHEW L. MARTINI, P.L.S. | 30089 |
| MAY 16, 1997 | MATTHEW L. MARTINI, P.L.S. | 30088 |
| DEC. 31, 2007 | WERNER A. MALL, P.L.S. | 37201 |



TOWNSHIP OF WARREN SOMERSET COUNTY

NEW JERSEY DEPARTMENT OF THE TREASURY
DIVISION OF TAXATION
PUBLIC UTILITY TAX BUREAU
APPROVED AS A TAX MAP PURSUANT TO THE
PROVISIONS OF CHAPTER 125, LAWS OF 1974, ETC.
FOR THE SINGLE YEAR ENDING OF TAXATION.
DATE 1-1-1974 SERIAL No. 503

TAX MAP
TOWNSHIP OF BERKELEY HEIGHTS
UNION COUNTY, NEW JERSEY
SCALE: 1"=100'
APRIL 1971
JAMES P. PURCELL ASSOCIATES
EAST ORANGE, NEW JERSEY
JOSEPH A. TOMBRO, L.S.